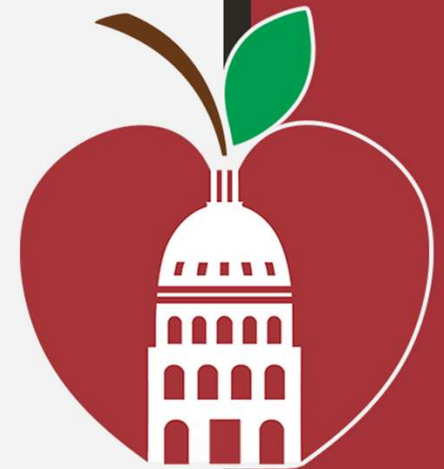


AUSTIN ISD REDISTRICTING

MAY 5, 2022 BOARD MEETING



Presented By:
Thompson & Horton LLP
Zonda Education



Criteria for Drawing SMD Boundaries

Statutory Criteria

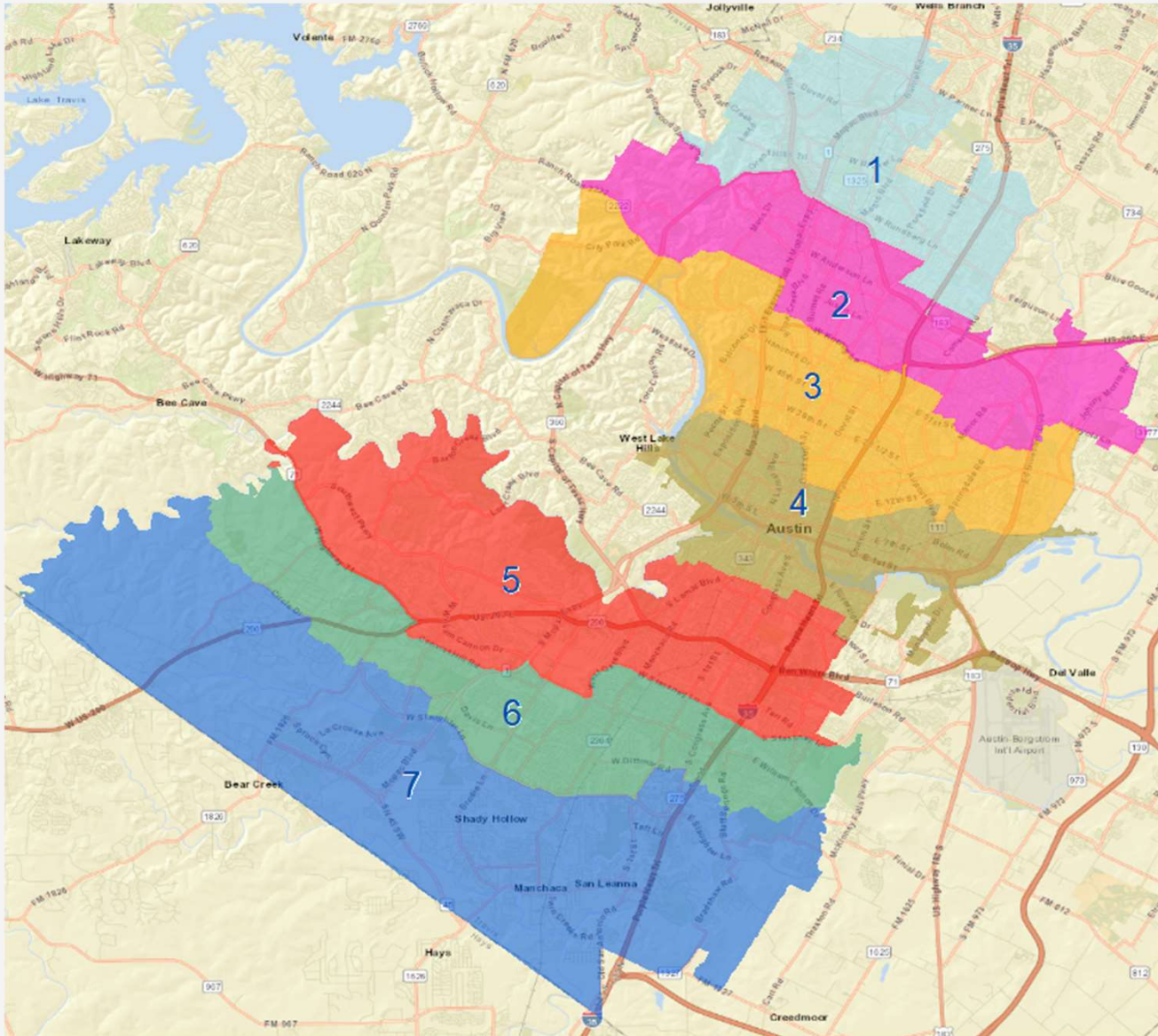
THEREFORE under Sections 11.051-11.053, 11.057, 11.061 and 11.062 of the Texas Education Code, and all other applicable federal and state law, BE IT RESOLVED and ORDERED by the Board of Trustees of the Austin Independent School District, the following criteria shall be observed to the greatest extent possible in reconfiguring the District's single-member districts:

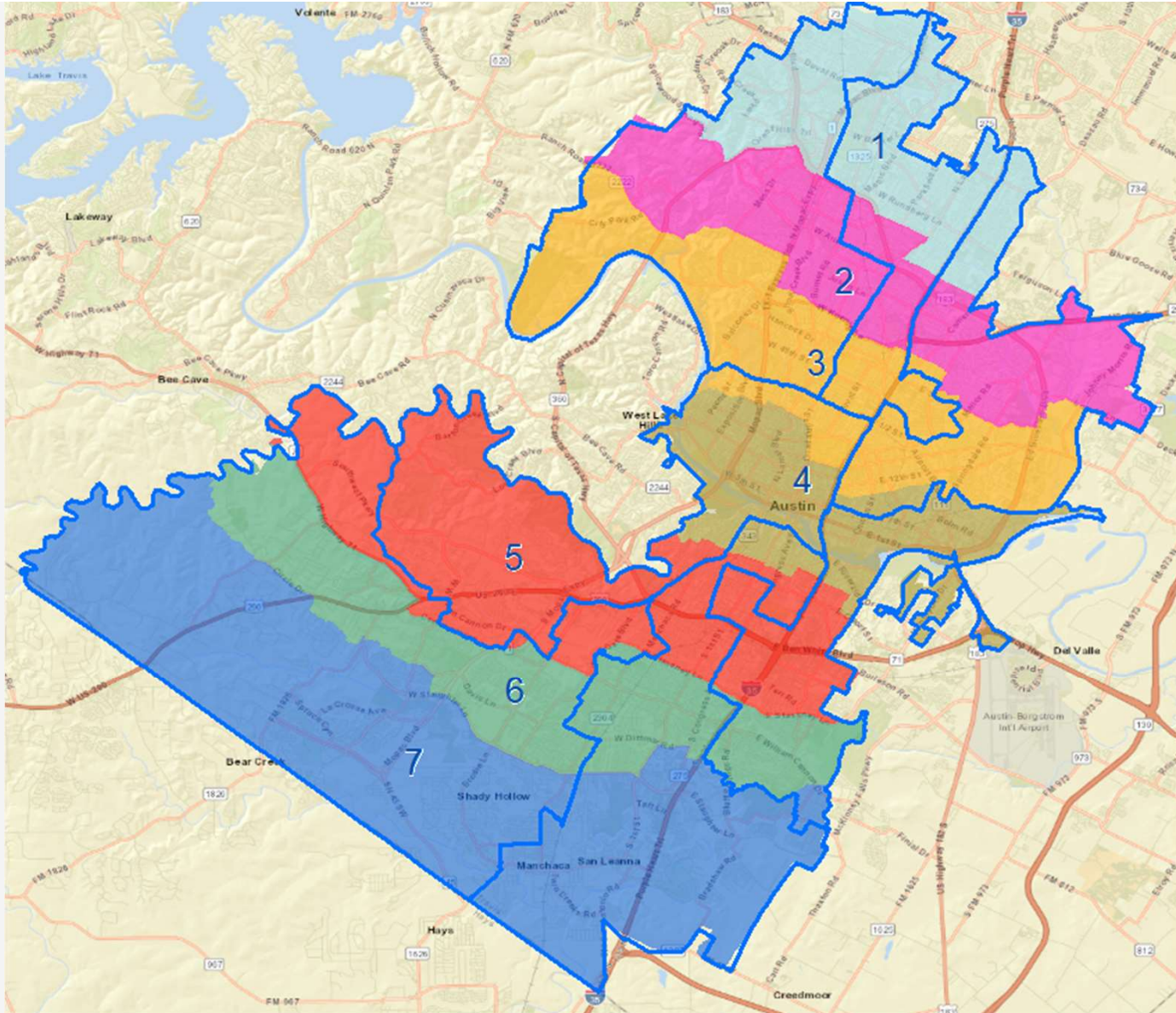
1. The District shall keep the total deviation between the largest and smallest single-member district at or within ten (10) percent;
2. Single-member districts shall be as nearly as practicable of equal population in terms of total population according to the 2020 Census;
3. Single-member districts shall be compact to the extent possible and composed of contiguous territory;
4. The racial and language minority status of residents shall be considered only to the narrow extent needed to avoid violating the Fifteenth Amendment and Equal Protection Clause of the Fourteenth Amendment to the United States Constitution, the Voting Rights Act of 1965, as amended, and the aforementioned provisions of the Texas Education Code (i.e., avoid retrogression of minority voting rights by drawing a plan where minority voting strength is not diminished relative to the existing plan);
5. Single-member districts shall be drawn to avoid splitting county election precincts, unless necessary to maintain proper deviation;

Non-Statutory Criteria

6. Where possible, the proposed map shall maintain communities of interest within single-member districts and attempts should be made to avoid splitting neighborhoods when redrawing single-member district lines;
7. Easily identifiable geographic and political boundaries shall be followed when possible;
8. Existing single-member district boundaries shall be preserved to the extent possible;
9. Single-member districts shall preserve incumbent-constituency relations by placing the residence of existing trustees in separate single-member districts; and
10. Where possible, single-member districts shall be drawn to use or account for other political boundaries (such as city or county boundaries).

Plan 3





Plan 3 – Census Totals

AUSTIN INDEPENDENT SCHOOL DISTRICT

2020 CENSUS TOTALS - PLAN 3

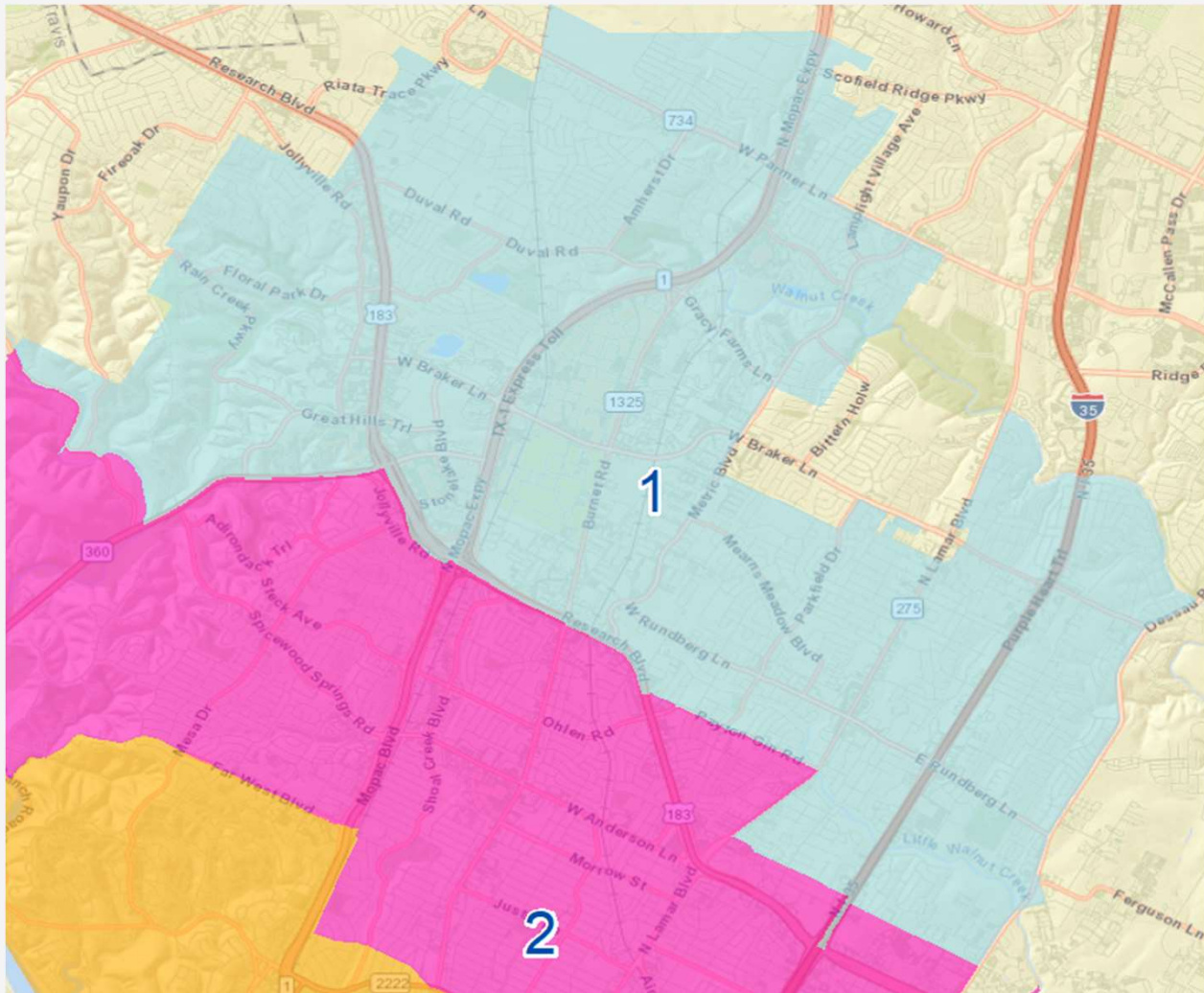
Trustee District	TOTAL POPULATION						TOTAL POPULATION PERCENTAGES						
	Anglo	Asian	Black	Hispanic	Other	Total	Anglo	Asian	Black	Hispanic	Other	Total	
1	38,930	7,972	7,437	46,215	4,353	104,907	37.1%	7.6%	7.1%	44.1%	4.1%	100.0%	
2	48,355	4,759	10,252	37,941	4,637	105,944	45.6%	4.5%	9.7%	35.8%	4.4%	100.0%	
3	62,609	8,888	7,752	21,484	5,027	105,760	59.2%	8.4%	7.3%	20.3%	4.8%	100.0%	
4	59,923	8,849	5,196	25,178	5,019	104,165	57.5%	8.5%	5.0%	24.2%	4.8%	100.0%	
5	54,938	5,682	4,862	35,623	4,845	105,950	51.9%	5.4%	4.6%	33.6%	4.6%	100.0%	
6	47,740	3,612	4,586	43,696	4,699	104,333	45.8%	3.5%	4.4%	41.9%	4.5%	100.0%	
7	52,776	6,846	4,904	35,607	5,256	105,389	50.1%	6.5%	4.7%	33.8%	5.0%	100.0%	
TOTALS	365,271	46,608	44,989	245,744	33,836	736,448	49.6%	6.3%	6.1%	33.4%	4.6%	100.0%	
				7 DIST AVG	105,207		1.7% Percent Differential *						

Trustee District	VOTING AGE POPULATION (VAP) PERCENTAGES						CITIZEN VOTING AGE POPULATION (CVAP) PERCENTAGES					
	Anglo	Asian	Black	Hispanic	Other	Total	Anglo	Asian	Black	Hispanic	Other	Total
1	41.3%	8.1%	7.3%	39.4%	3.9%	100.0%	59.0%	4.9%	9.3%	24.4%	2.4%	100%
2	49.4%	4.8%	9.8%	32.1%	3.8%	100.0%	60.8%	2.3%	11.7%	22.8%	2.5%	100%
3	60.7%	9.1%	7.2%	18.9%	4.1%	100.0%	66.0%	4.0%	11.0%	16.7%	2.3%	100%
4	59.4%	8.8%	4.9%	22.5%	4.4%	100.0%	65.0%	6.2%	5.1%	21.4%	2.3%	100%
5	55.4%	5.5%	4.5%	30.4%	4.1%	100.0%	61.2%	3.3%	5.9%	27.9%	1.7%	100%
6	49.2%	3.7%	4.5%	38.5%	4.1%	100.0%	55.1%	2.5%	5.6%	34.8%	2.0%	100%
7	52.6%	6.5%	5.0%	31.7%	4.3%	100.0%	59.8%	3.9%	4.5%	29.6%	2.2%	100%
TOTALS	52.8%	6.7%	6.2%	30.2%	4.1%	100.0%	61.1%	3.9%	7.6%	25.2%	2.2%	100%

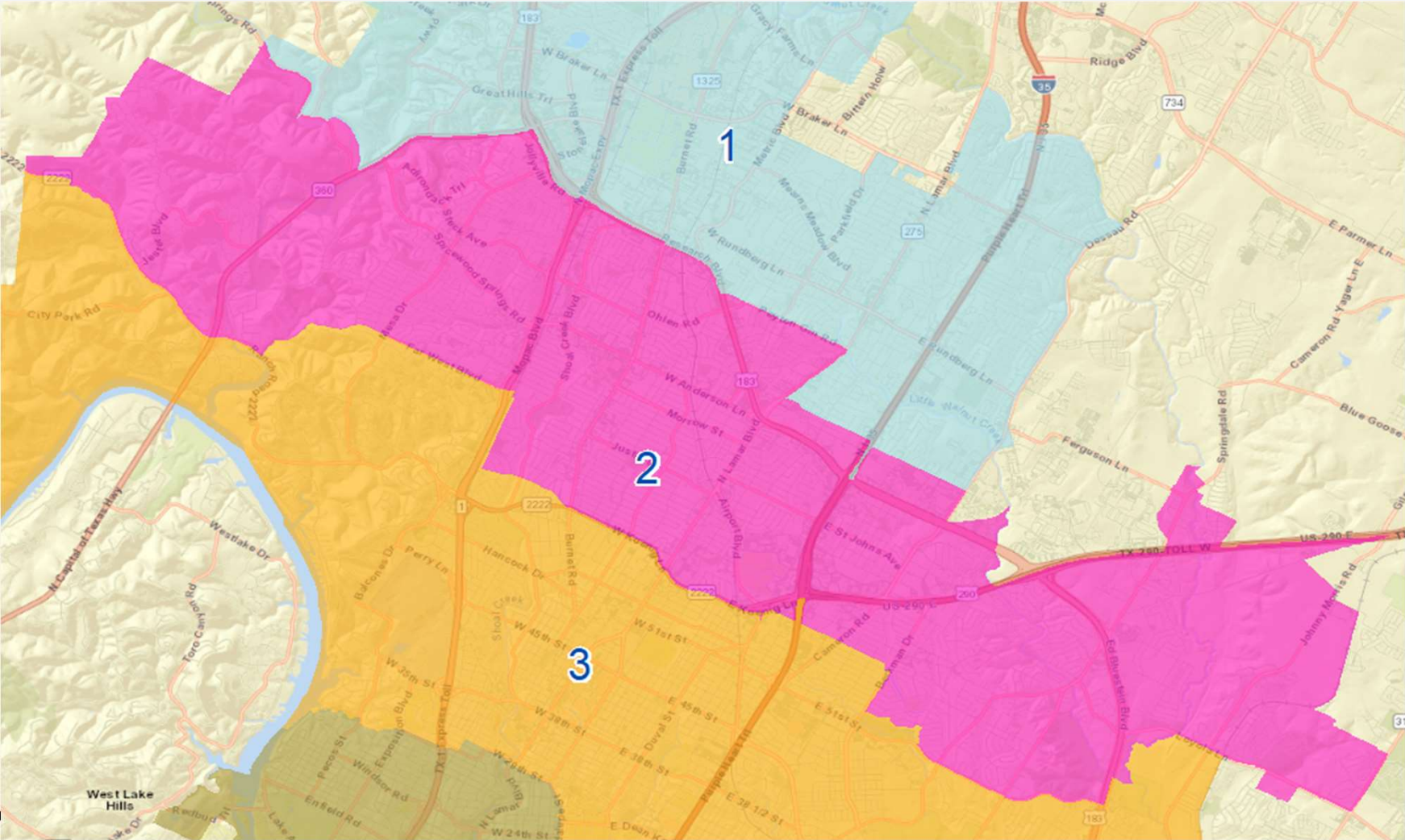
SOURCE: Total Population and Voting Age Population summarized from 2020 Census PL 94-171 Redistricting Data at the block level.

Citizen Voting Age Population data was extrapolated from 2020 Block Group Data using the 2015-2019 American Community Survey

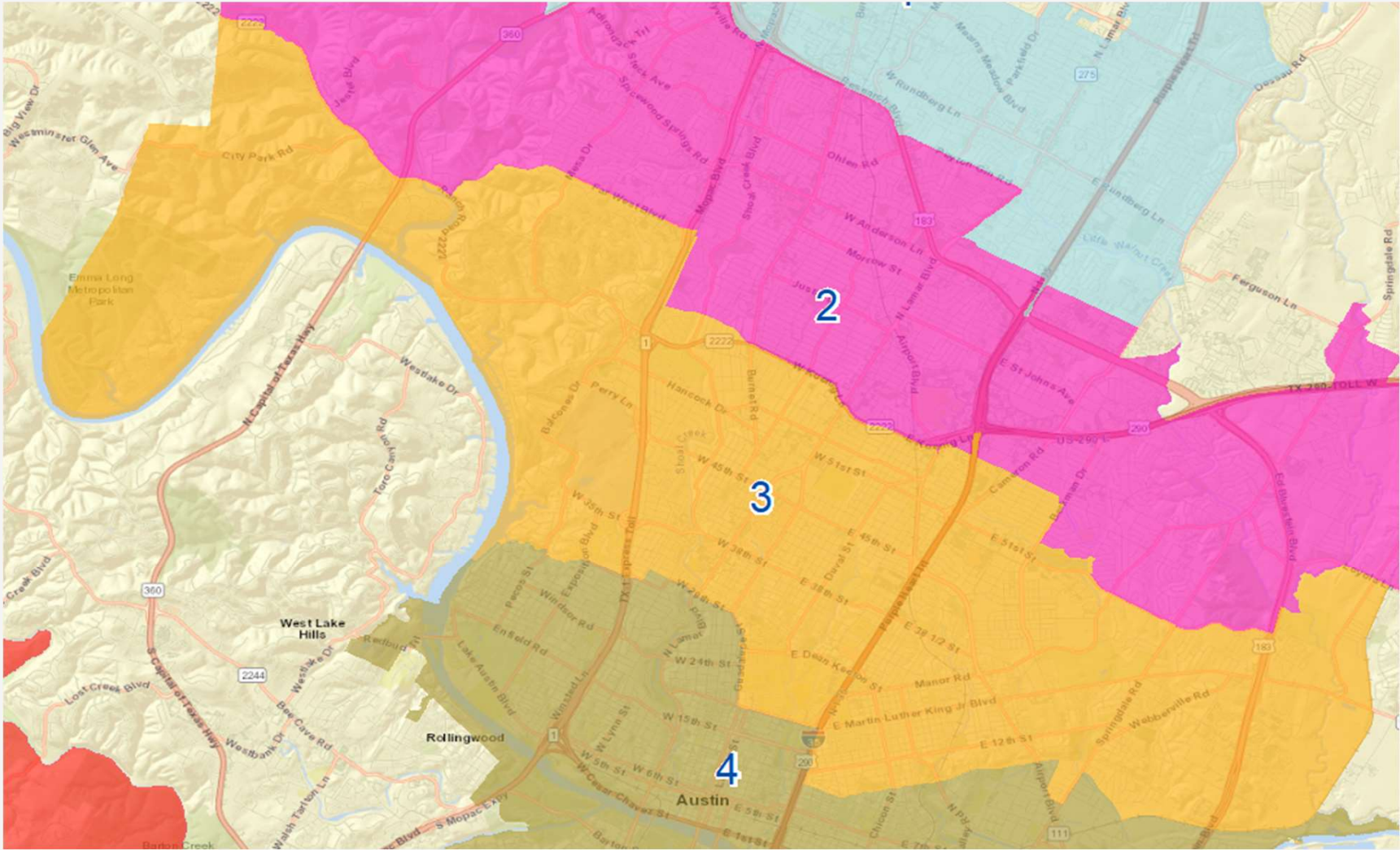
Plan 3 – SMD 1



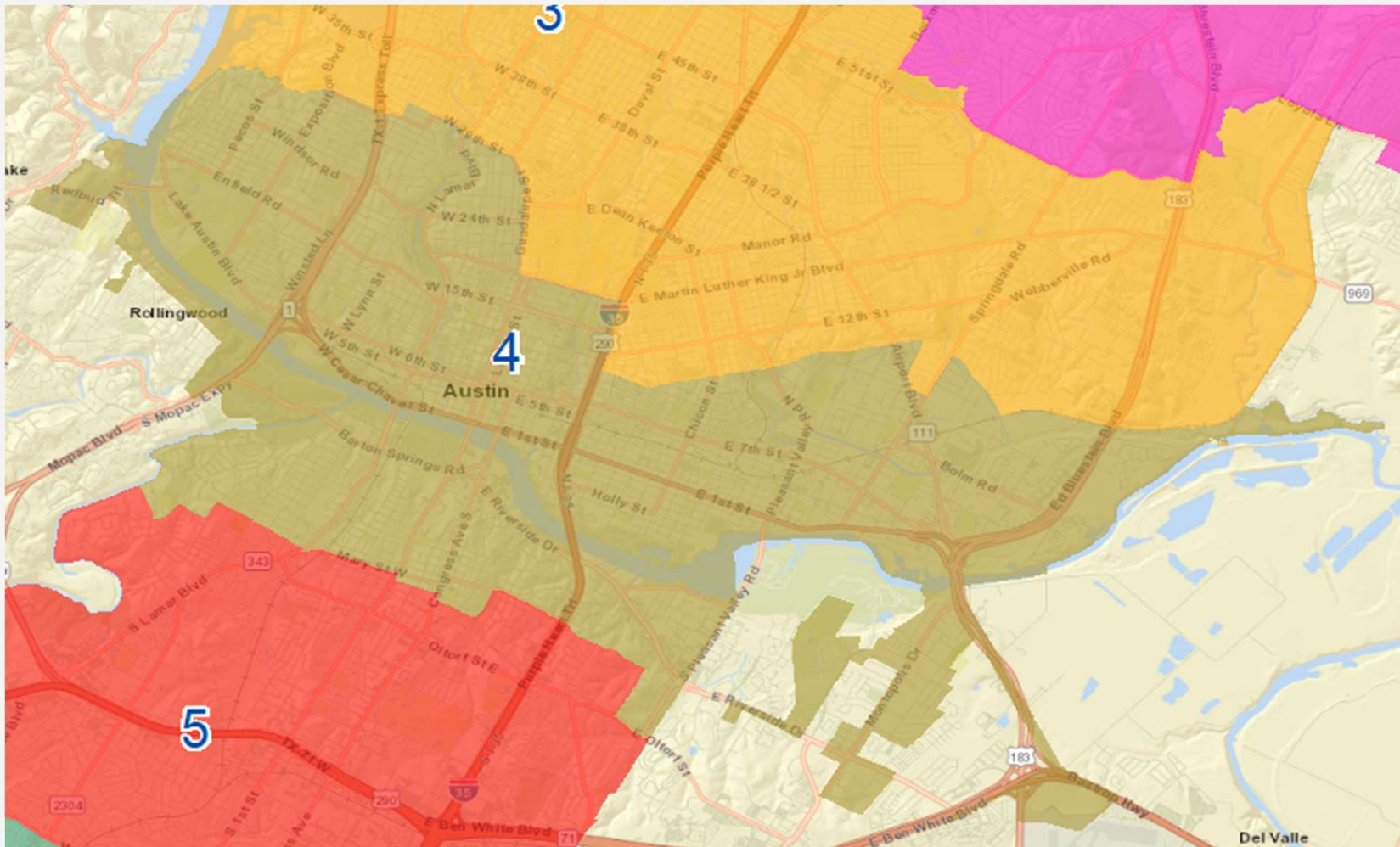
Plan 3 – SMD 2



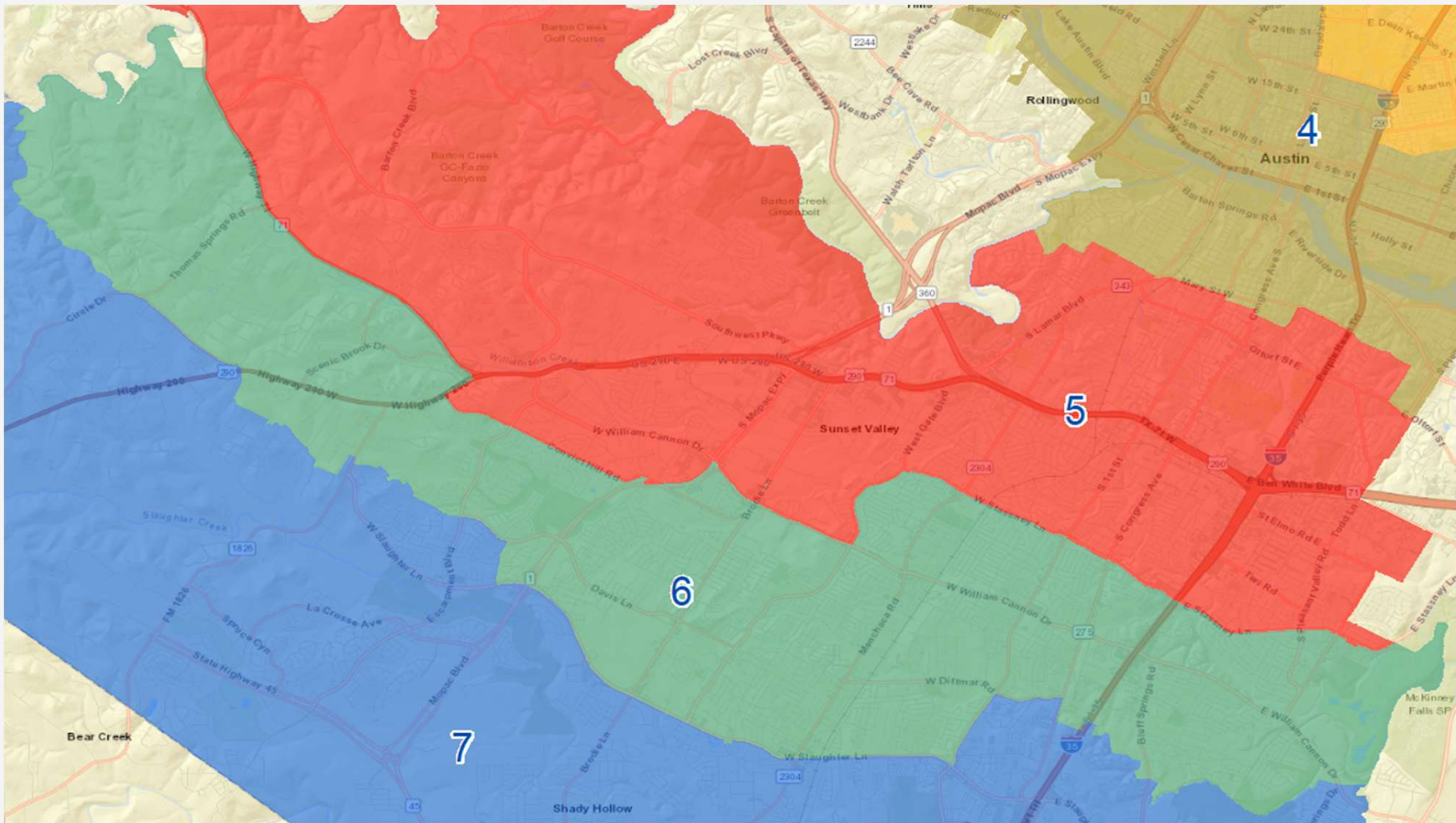
Plan 3 – SMD 3



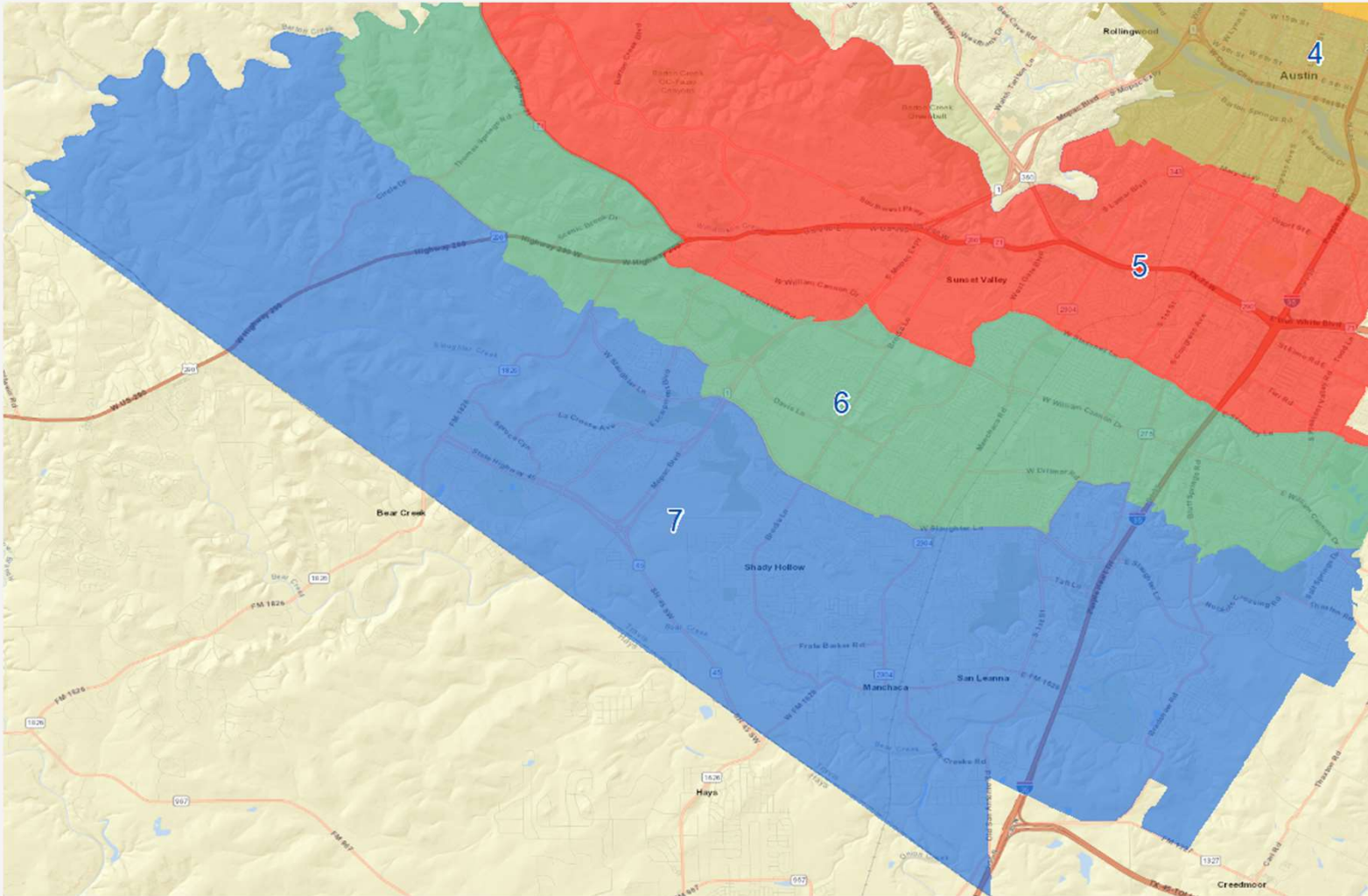
Plan 3 – SMD 4



Plan 3 – SMD 6



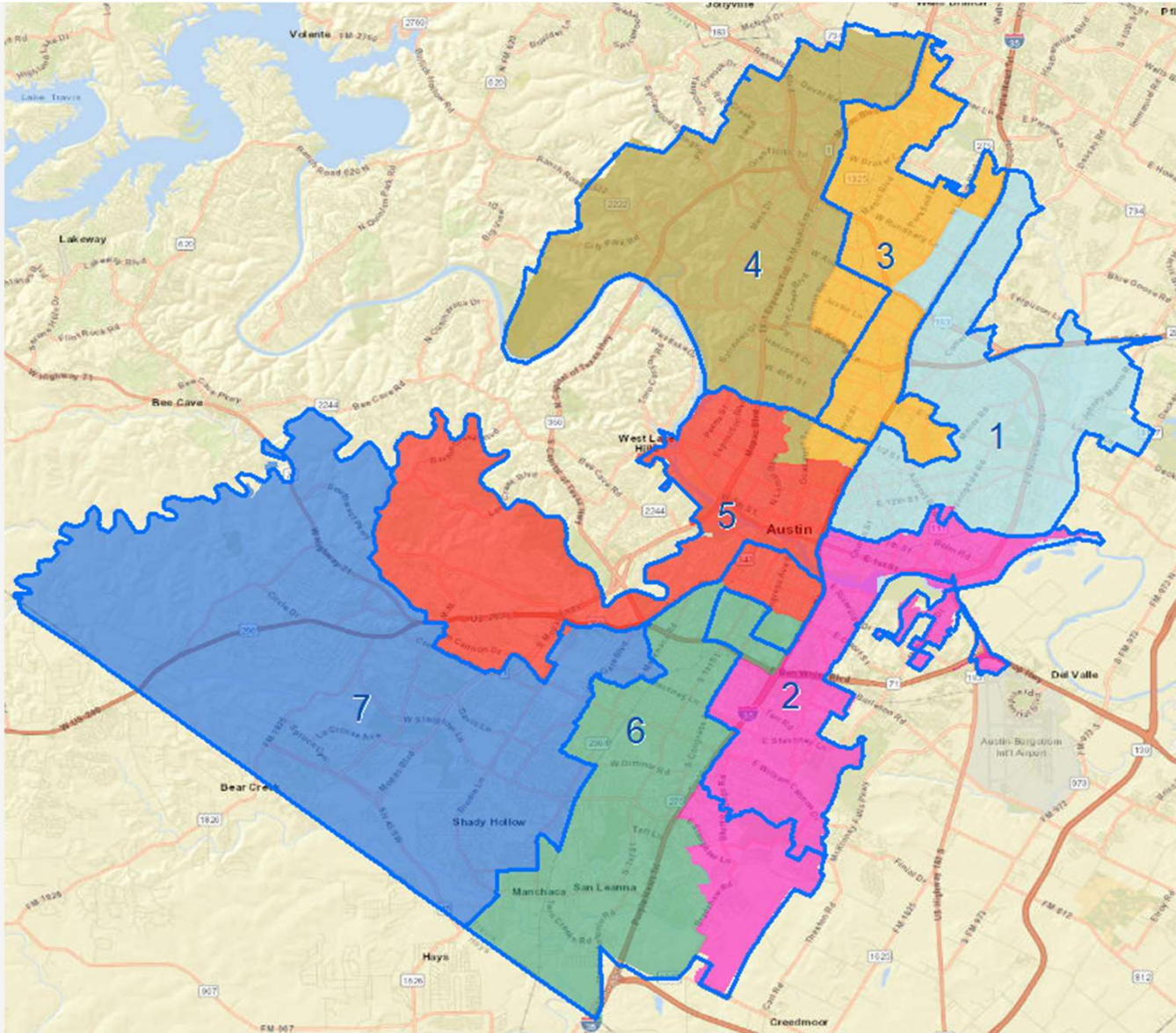
Plan 3 – SMD 7



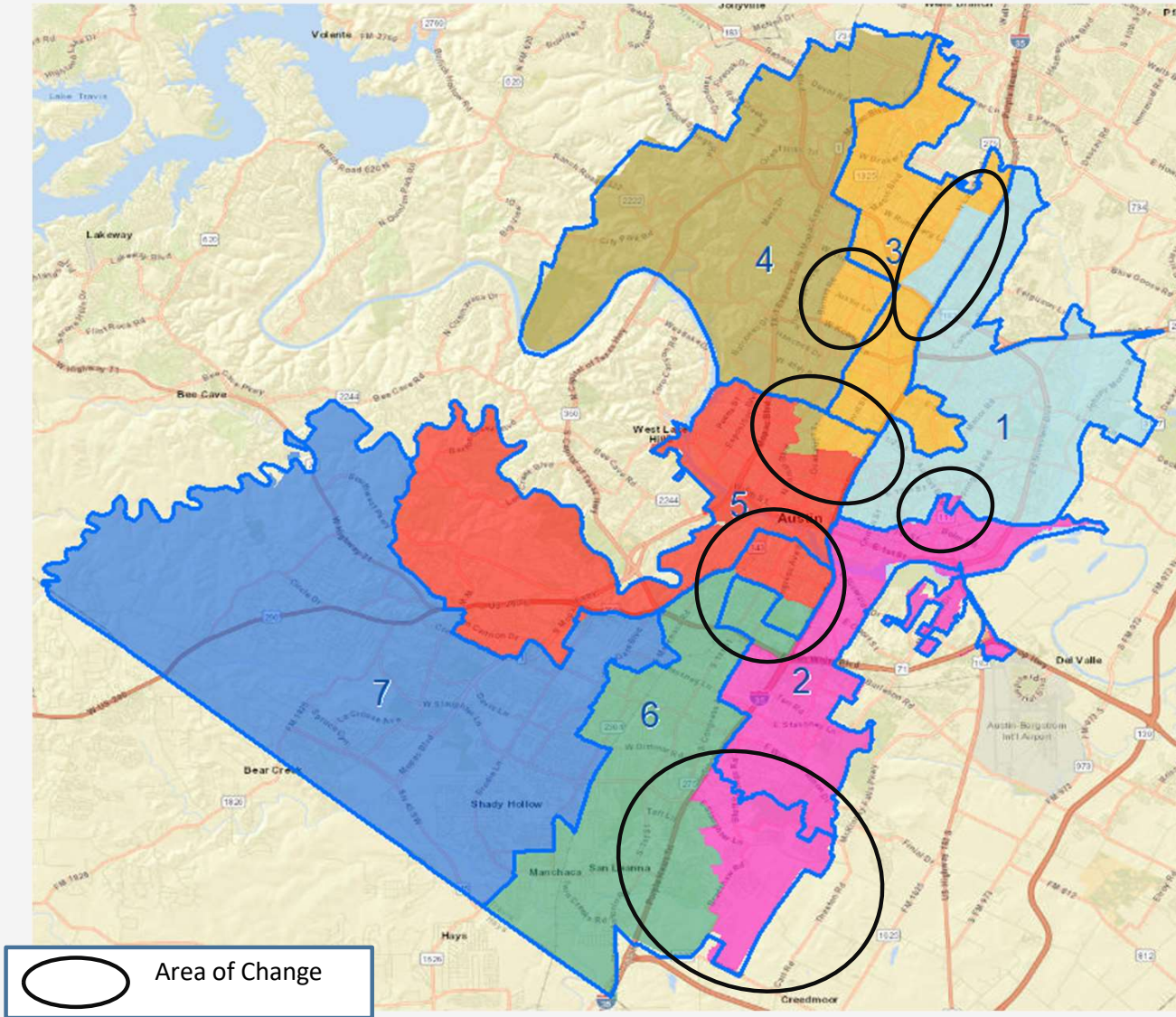
Community Feedback

Plan 4

Current Boundary



Current Boundary



Plan 4 – Census Totals

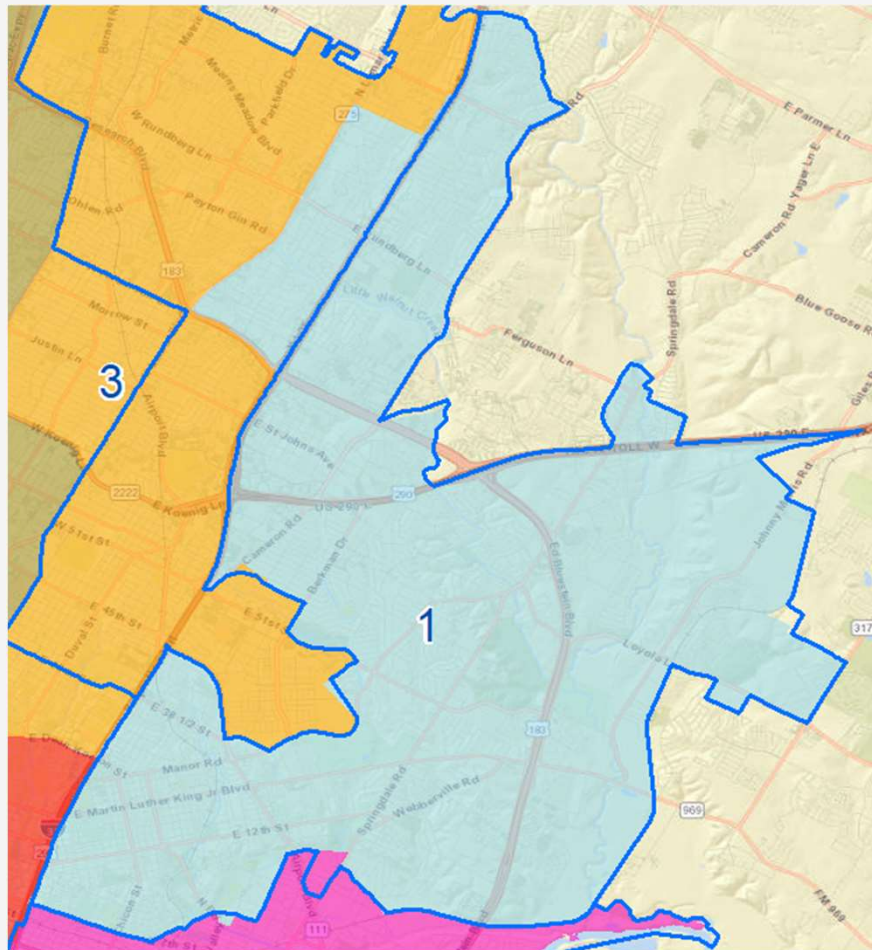
AUSTIN INDEPENDENT SCHOOL DISTRICT													
2020 CENSUS TOTALS - PLAN 4													
Trustee District	TOTAL POPULATION						TOTAL POPULATION PERCENTAGES						
	Anglo	Asian	Black	Hispanic	Other	Total	Anglo	Asian	Black	Hispanic	Other	Total	
1	30,627	2,961	17,190	53,580	3,859	108,217	28.3%	2.7%	15.9%	49.5%	3.6%	100.0%	
2	28,386	3,048	7,571	57,933	3,682	100,620	28.2%	3.0%	7.5%	57.6%	3.7%	100.0%	
3	50,057	8,779	5,864	37,277	5,237	107,214	46.7%	8.2%	5.5%	34.8%	4.9%	100.0%	
4	72,004	9,943	2,961	16,020	5,362	106,290	67.7%	9.4%	2.8%	15.1%	5.0%	100.0%	
5	68,495	10,596	3,159	16,408	5,028	103,686	66.1%	10.2%	3.0%	15.8%	4.8%	100.0%	
6	49,946	3,955	5,290	39,086	4,887	103,164	48.4%	3.8%	5.1%	37.9%	4.7%	100.0%	
7	65,756	7,326	2,954	25,440	5,781	107,257	61.3%	6.8%	2.8%	23.7%	5.4%	100.0%	
TOTALS	365,271	46,608	44,989	245,744	33,836	736,448	49.6%	6.3%	6.1%	33.4%	4.6%	100.0%	
				7 DIST AVG	105,207		7.6% Percent Differential *						
Trustee District	VOTING AGE POPULATION (VAP) PERCENTAGES						CITIZEN VOTING AGE POPULATION (CVAP) PERCENTAGES						
	Anglo	Asian	Black	Hispanic	Other	Total	Anglo	Asian	Black	Hispanic	Other	Total	
1	32.4%	2.9%	16.6%	44.6%	3.4%	100.0%	40.9%	2.4%	23.8%	30.2%	2.7%	100%	
2	32.7%	3.4%	7.5%	52.8%	3.6%	100.0%	36.8%	1.8%	9.4%	49.9%	2.1%	100%	
3	50.3%	8.8%	5.5%	30.9%	4.5%	100.0%	65.0%	4.6%	6.6%	21.6%	2.3%	100%	
4	69.0%	9.7%	2.9%	14.3%	4.1%	100.0%	76.4%	5.4%	3.2%	12.8%	2.2%	100%	
5	67.0%	10.6%	3.1%	15.1%	4.2%	100.0%	73.6%	5.6%	4.2%	14.4%	2.2%	100%	
6	51.6%	4.0%	5.2%	34.7%	4.4%	100.0%	58.0%	2.6%	5.1%	32.2%	2.1%	100%	
7	63.7%	6.8%	2.9%	22.1%	4.5%	100.0%	68.5%	4.0%	3.7%	21.9%	1.9%	100%	
TOTALS	52.8%	6.7%	6.2%	30.2%	4.1%	100.0%	61.1%	3.9%	7.6%	25.2%	2.2%	100%	

SOURCE: Total Population and Voting Age Population summarized from 2020 Census PL 94-171 Redistricting Data at the block level.

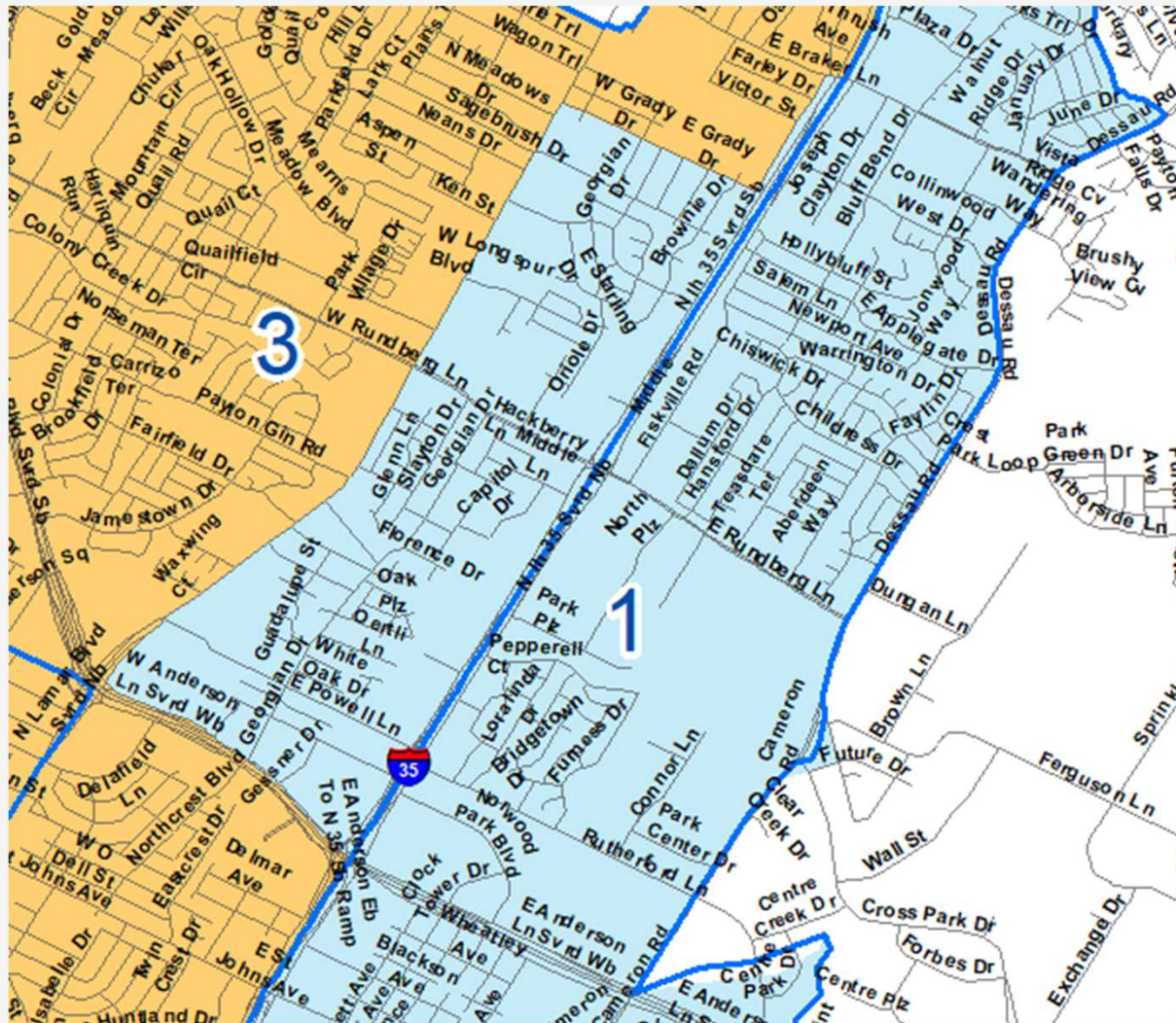
Citizen Voting Age Population data was extrapolated from 2020 Block Group Data using the 2015-2019 American Community Survey

Plan 4 vs. Current – SMD 1

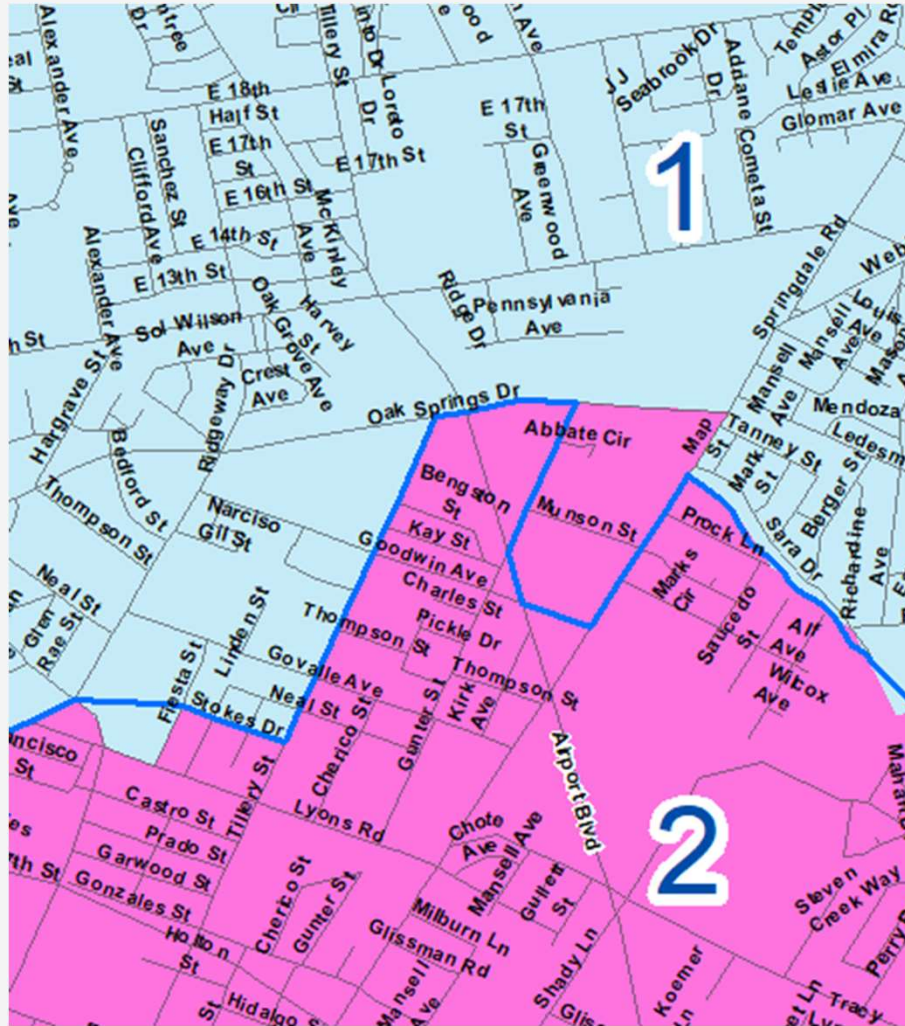
—
Current Boundary



Plan 4 vs. Current – SMD 1



Plan 4 vs. Current – SMD 1



— Current Boundary

Key Proposed Changes to Single-Member District 1 in Plan 4

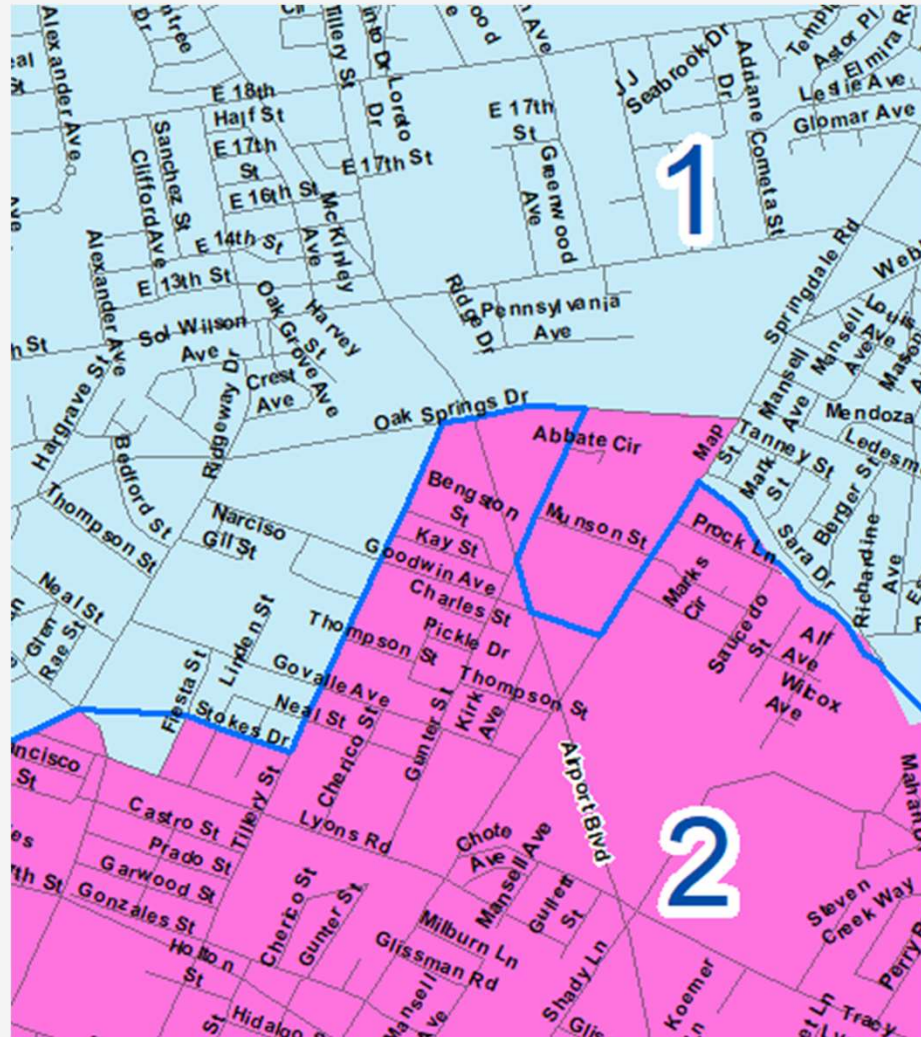
- SMD 1 gains population on the northwest side of the district from SMD 3
 - A portion of the Western boundary moves from 35 to Lamar north of Anderson Ln
 - Mueller neighborhood remains in District 3 in this plan
- SMD 1 gains population from SMD 2 along the southern boundary at the Fiesta St. and Lyons Rd. intersection
- SMD 1 loses population to SMD 2 along the southern boundary in between Airport Rd. and Springdale Rd.

District 1 – Plan Comparison

DISTRICT 1 - Plan Comparison						
Category	2010 Census	2020 Census	Plan 1	Plan 2	Plan 3	Plan 4
Population Totals						
Total Anglo Population	19,812	28,704	33,952	30,011	38,930	30,627
Total Asian Population	1,154	2,309	3,301	3,117	7,972	2,961
Total Black Population	21,273	16,092	16,158	16,646	7,437	17,190
Total Hispanic Population	43,732	43,739	45,038	53,358	46,215	53,580
Total Other Population	1,515	3,441	4,001	3,796	4,353	3,859
Total Population	87,486	94,285	102,450	106,928	104,907	108,217
Total Population Percentages						
Total Anglo Population	22.6%	30.4%	33.1%	28.1%	37.1%	28.3%
Total Asian Population	1.3%	2.4%	3.2%	2.9%	7.6%	2.7%
Total Black Population	24.3%	17.1%	15.8%	15.6%	7.1%	15.9%
Total Hispanic Population	50.0%	46.4%	44.0%	49.9%	44.1%	49.5%
Total Other Population	1.7%	3.6%	3.9%	3.6%	4.1%	3.6%
Total Population	100.0%	100.0%	100.0%	100.0%	100.0%	100.0%
Voting Age Population Percentages						
Total Anglo VAP	28.4%	34.6%	37.2%	32.2%	41.3%	32.4%
Total Asian VAP	1.5%	2.7%	3.5%	3.1%	8.1%	2.9%
Total Black VAP	25.4%	17.7%	16.4%	16.2%	7.3%	16.6%
Total Hispanic VAP	43.2%	41.5%	39.3%	45.1%	39.4%	44.6%
Total Other VAP	1.6%	3.5%	3.7%	3.4%	3.9%	3.4%
Total VAP	100.0%	100.0%	100.0%	100.0%	100.0%	100.0%
Citizen Voting Age Population Percentages						
Total Anglo CVAP	37.5%	42.3%	44.8%	41.2%	59.0%	40.9%
Total Asian CVAP	N/A	2.0%	2.6%	2.3%	4.9%	2.4%
Total Black CVAP	34.8%	23.9%	22.7%	23.5%	9.3%	23.8%
Total Hispanic CVAP	24.3%	29.2%	27.6%	30.4%	24.4%	30.2%
Total Other CVAP	3.3%	2.5%	2.4%	2.7%	2.4%	2.7%
Total CVAP	100.0%	100.0%	100.0%	100.0%	100.0%	100.0%

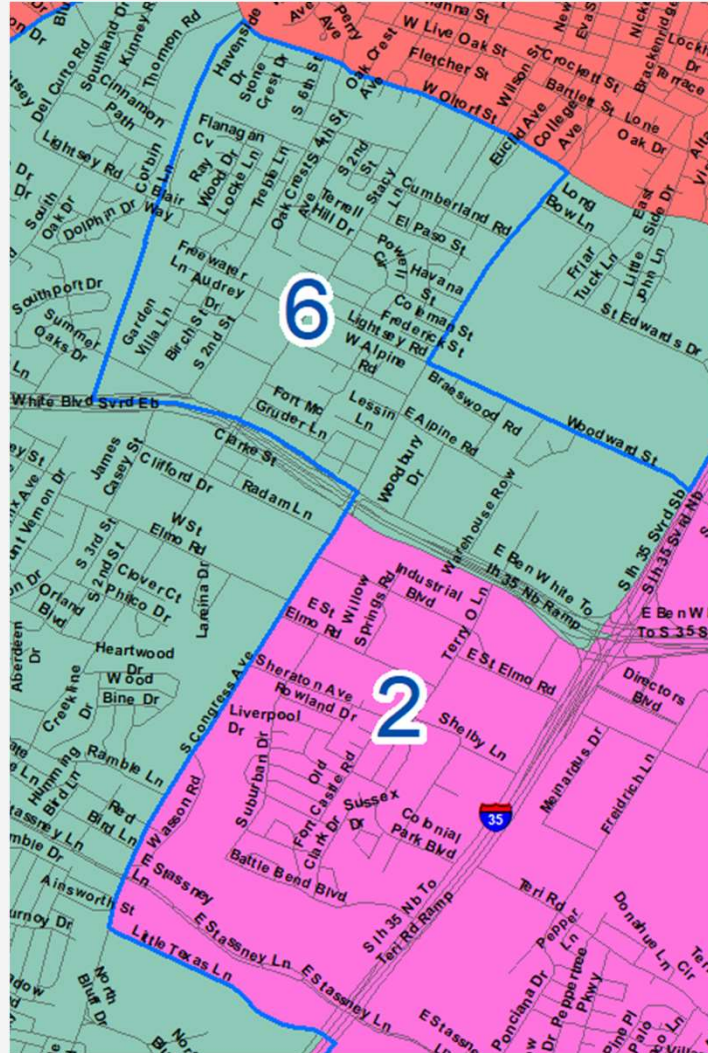
SOURCE: Total Population and Voting Age Population summarized from 2020 Census PL 94-171 Redistricting Data at the block level.

Plan 4 vs. Current – SMD 2



— Current Boundary

Plan 4 vs. Current – SMD 2



Key Proposed Changes to Single-Member District 2 in Plan 4

- SMD 2 loses population to SMD 1 along the southern boundary at the Fiesta St. and Lyons Rd. intersection
- SMD 2 gains population to SMD 1 along the southern boundary in between Airport Rd. and Springdale Rd.
- SMD 2 loses population on the western side of the district to SMD 6
- SMD 2 gains population on the southeastern end of the district from SMD 6

District 2 – Plan Comparison

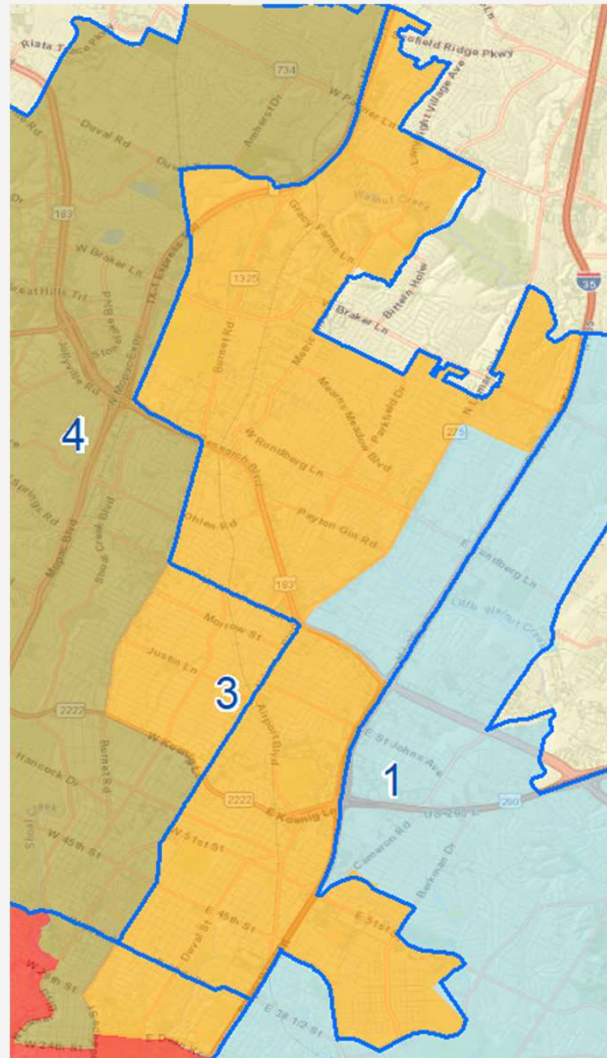
DISTRICT 2 - Plan Comparison						
Category	2010 Census	2020 Census	Plan 1	Plan 2	Plan 3	Plan 4
Population Totals						
Total Anglo Population	18,515	28,697	35,417	28,065	48,355	30,627
Total Asian Population	1,215	2,773	3,434	3,026	4,759	3,048
Total Black Population	6,371	6,427	7,374	8,044	10,252	7,571
Total Hispanic Population	60,288	51,899	55,642	57,410	37,941	57,933
Total Other Population	1,378	3,462	4,040	3,713	4,637	3,859
Total Population	87,767	93,258	105,907	100,258	105,944	103,038
Total Population Percentages						
Total Anglo Population	21.1%	30.8%	33.4%	28.0%	45.6%	29.7%
Total Asian Population	1.4%	3.0%	3.2%	3.0%	4.5%	3.0%
Total Black Population	7.3%	6.9%	7.0%	8.0%	9.7%	7.3%
Total Hispanic Population	68.7%	55.7%	52.5%	57.3%	35.8%	56.2%
Total Other Population	1.6%	3.7%	3.8%	3.7%	4.4%	3.7%
Total Population	100.0%	100.0%	100.0%	100.0%	100.0%	100.0%
Voting Age Population Percentages						
Total Anglo VAP	26.7%	35.5%	38.1%	32.5%	49.4%	32.7%
Total Asian VAP	1.6%	3.3%	3.5%	3.3%	4.8%	3.4%
Total Black VAP	7.4%	6.9%	6.8%	8.1%	9.8%	7.5%
Total Hispanic VAP	62.8%	50.7%	47.8%	52.4%	32.1%	52.8%
Total Other VAP	1.6%	3.7%	3.7%	3.6%	3.8%	3.6%
Total VAP	100.0%	100.0%	100.0%	100.0%	100.0%	100.0%
Citizen Voting Age Population Percentages						
Total Anglo CVAP	37.6%	40.1%	43.4%	35.9%	60.8%	36.8%
Total Asian CVAP	N/A	2.1%	1.9%	1.9%	2.3%	1.8%
Total Black CVAP	11.2%	9.0%	8.8%	10.5%	11.7%	9.4%
Total Hispanic CVAP	47.9%	46.8%	43.8%	49.6%	22.8%	49.9%
Total Other CVAP	3.2%	2.0%	2.1%	2.2%	2.5%	2.1%
Total CVAP	100.0%	100.0%	100.0%	100.0%	100.0%	100.0%

SOURCE: Total Population and Voting Age Population summarized from 2020 Census PL 94-171 Redistricting Data at the block level.

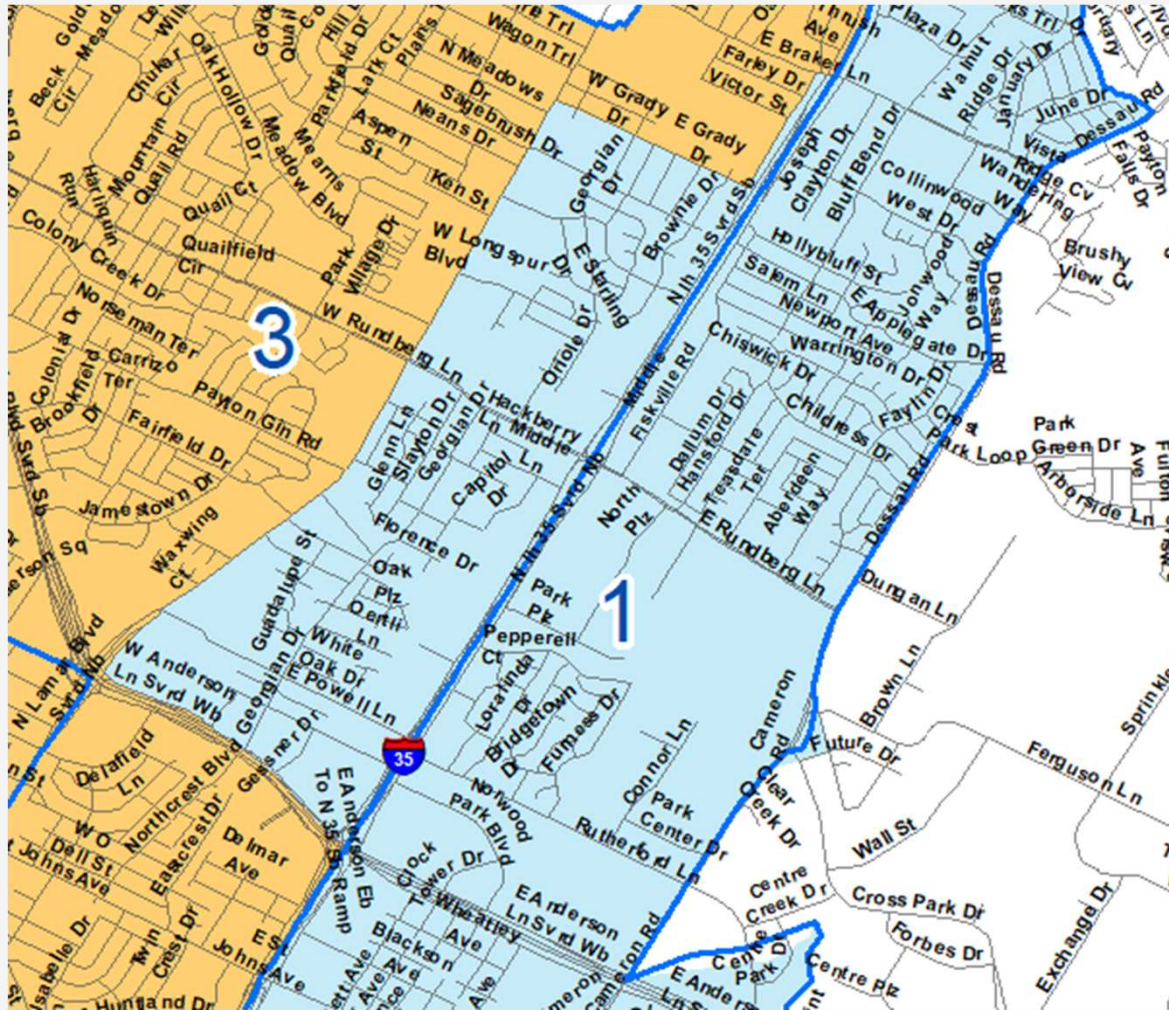
Citizen Voting Age Population (CVAP) data was extrapolated from 2010 Block Group Data using the 2015-2019 American Community Survey

CVAP Change "Other" was calculated as follows: (2020CVAP-Other+2020CVAP-Asian)-(2010CVAP-Other) = Other

Plan 4 vs. Current – SMD 3

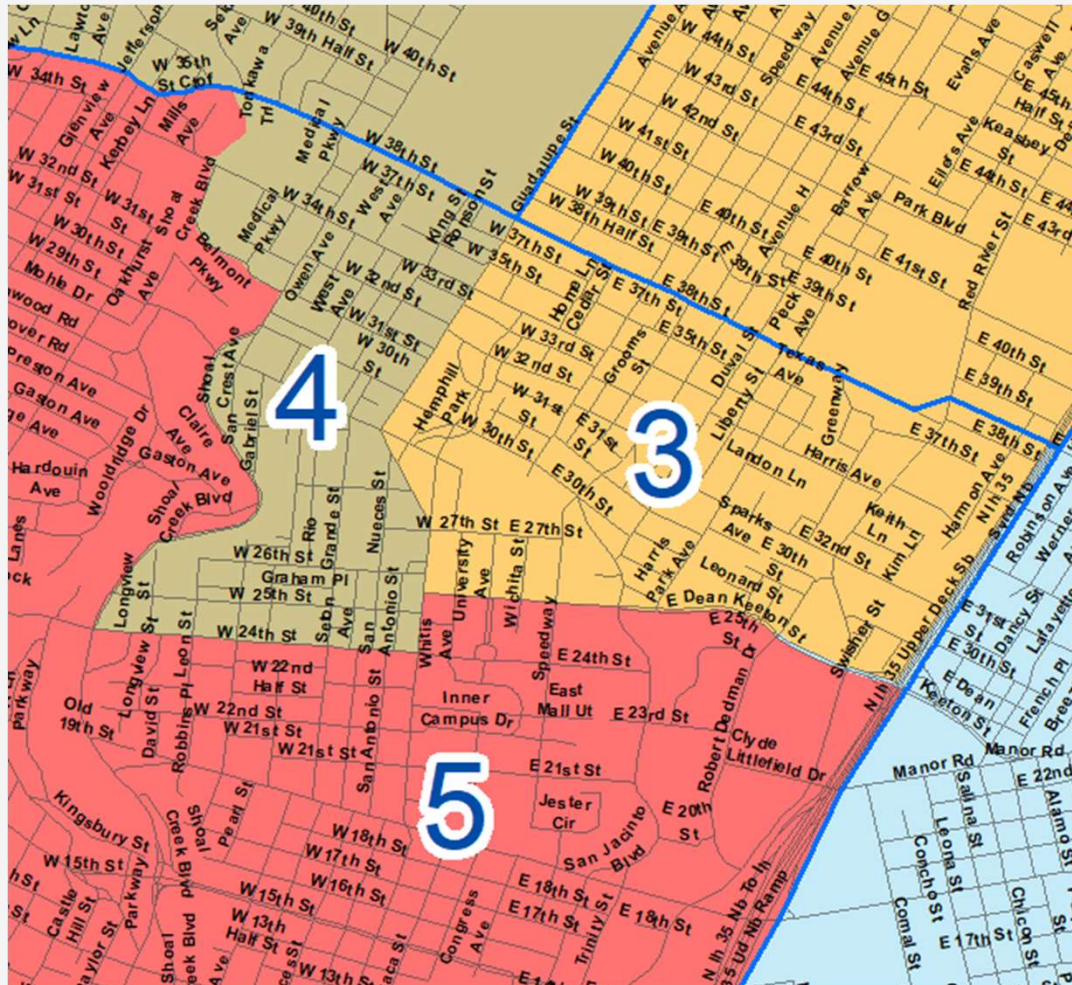


Plan 4 vs. Current – SMD 3



— Current Boundary

Plan 4 vs. Current – SMD 3



— Current Boundary

Key Proposed Changes to Single-Member District 3 in Plan 4

- SMD 3 gains population on the southwestern side of the district from SMD 4 (within Brentwood neighborhood)
 - Southern boundary moves from W. Anderson Lane to RR2222/Koenig between Burnet Rd. and Lamar Blvd.
- SMD 3 loses population on the northeast side of the district to SMD 1
 - Mueller neighborhood remains in District 3 in this plan
- SMD 3 gains population on the southeastern end from SMD 5
 - Southern boundary moves from 35th street to Dean Keeton between 35 and Guadalupe

District 3 – Plan Comparison

DISTRICT 3 - Plan Comparison						
Category	2010 Census	2020 Census	Plan 1	Plan 2	Plan 3	Plan 4
Population Totals						
Total Anglo Population	30,857	38,404	40,572	49,017	62,609	50,057
Total Asian Population	4,813	7,142	6,823	8,493	8,888	8,779
Total Black Population	6,998	6,818	6,525	5,720	7,752	5,864
Total Hispanic Population	43,677	44,224	43,907	36,323	21,484	37,277
Total Other Population	1,775	4,511	4,577	5,088	5,027	5,237
Total Population	88,120	101,099	102,404	104,641	105,760	107,214
Total Population Percentages						
Total Anglo Population	35.0%	38.0%	39.6%	46.8%	59.2%	46.7%
Total Asian Population	5.5%	7.1%	6.7%	8.1%	8.4%	8.2%
Total Black Population	7.9%	6.7%	6.4%	5.5%	7.3%	5.5%
Total Hispanic Population	49.6%	43.7%	42.9%	34.7%	20.3%	34.8%
Total Other Population	2.0%	4.5%	4.5%	4.9%	4.8%	4.9%
Total Population	100.0%	100.0%	100.0%	100.0%	100.0%	100.0%
Voting Age Population Percentages						
Total Anglo VAP	41.2%	42.4%	43.9%	50.4%	60.7%	50.3%
Total Asian VAP	6.0%	7.6%	7.2%	8.8%	9.1%	8.8%
Total Black VAP	7.7%	6.8%	6.4%	5.5%	7.2%	5.5%
Total Hispanic VAP	43.2%	39.0%	38.2%	30.8%	18.9%	30.9%
Total Other VAP	1.8%	4.2%	4.2%	4.5%	4.1%	4.5%
Total VAP	100.0%	100.0%	100.0%	100.0%	100.0%	100.0%
Citizen Voting Age Population Percentages						
Total Anglo CVAP	58.8%	58.0%	59.9%	65.0%	66.0%	65.0%
Total Asian CVAP	N/A	4.8%	4.1%	4.7%	4.0%	4.6%
Total Black CVAP	11.4%	9.1%	8.4%	6.5%	11.0%	6.6%
Total Hispanic CVAP	22.9%	25.8%	25.1%	21.5%	16.7%	21.6%
Total Other CVAP	6.9%	2.2%	2.5%	2.3%	2.3%	2.3%
Total CVAP	100.0%	100.0%	100.0%	100.0%	100.0%	100.0%

SOURCE: Total Population and Voting Age Population summarized from 2020 Census PL 94-171 Redistricting Data at the block level.

Citizen Voting Age Population (CVAP) data was extrapolated from 2010 Block Group Data using the 2015-2019 American Community Survey

CVAP Change "Other" was calculated as follows: (2020CVAP-Other+2020CVAP-Asian)-(2010CVAP-Other) = Other

Key Proposed Changes to Single-Member District 4 in Plan 4

- SMD 4 loses population on the east side of the district to SMD 3 (within Brentwood neighborhood)
 - Northern boundary moves from W. Anderson Lane to RR2222/Koenig from Burnet Rd. to Lamar Blvd.
- SMD 4 gains population on the southeastern end of the district from SMD 5
 - Southern boundary moves to W. 24th St. between Guadalupe and Lamar Blvd.

District 4 – Plan Comparison

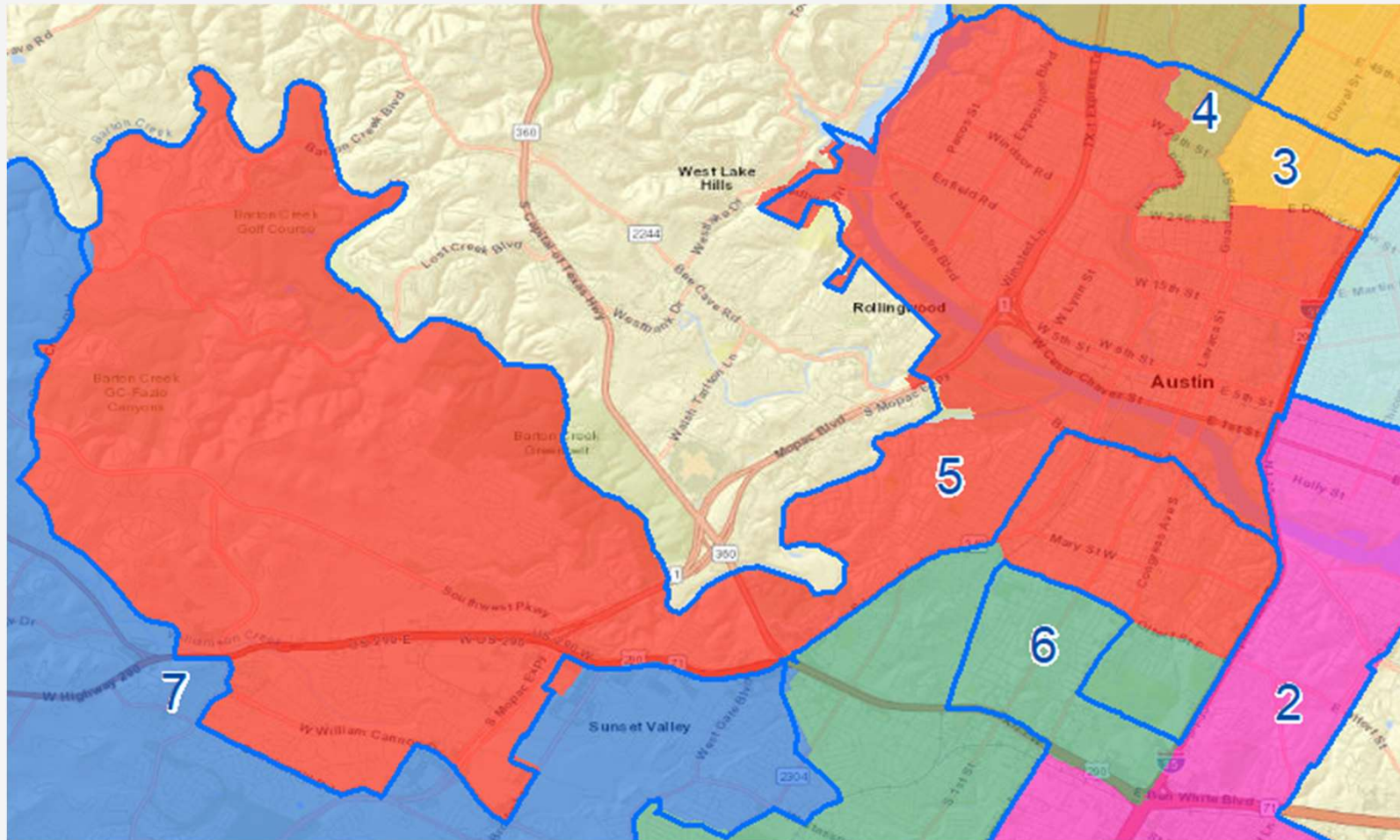
DISTRICT 4 - Plan Comparison						
Category	2010 Census	2020 Census	Plan 1	Plan 2	Plan 3	Plan 4
Population Totals						
Total Anglo Population	72,707	73,713	70,940	72,004	59,923	72,004
Total Asian Population	5,606	8,551	7,996	9,943	8,849	9,943
Total Black Population	2,315	2,823	2,641	2,961	5,196	2,961
Total Hispanic Population	11,443	15,925	14,558	16,020	25,178	16,020
Total Other Population	2,110	5,580	5,170	5,362	5,019	5,362
Total Population	94,181	106,592	101,305	106,290	104,165	106,290
Total Population Percentages						
Total Anglo Population	77.2%	69.2%	70.0%	67.7%	57.5%	67.7%
Total Asian Population	6.0%	8.0%	7.9%	9.4%	8.5%	9.4%
Total Black Population	2.5%	2.6%	2.6%	2.8%	5.0%	2.8%
Total Hispanic Population	12.2%	14.9%	14.4%	15.1%	24.2%	15.1%
Total Other Population	2.2%	5.2%	5.1%	5.0%	4.8%	5.0%
Total Population	100.0%	100.0%	100.0%	100.0%	100.0%	100.0%
Voting Age Population Percentages						
Total Anglo VAP	78.5%	70.6%	71.5%	69.0%	59.4%	69.0%
Total Asian Population	6.1%	8.3%	8.1%	9.7%	8.8%	9.7%
Total Black VAP	2.4%	2.8%	2.7%	2.9%	4.9%	2.9%
Total Hispanic VAP	11.2%	14.1%	13.6%	14.3%	22.5%	14.3%
Total Other VAP	1.8%	4.2%	4.1%	4.1%	4.4%	4.1%
Total VAP	100.0%	100.0%	100.0%	100.0%	100.0%	100.0%
Citizen Voting Age Population Percentages						
Total Anglo CVAP	82.0%	78.4%	78.8%	76.4%	65.0%	76.4%
Total Asian CVAP	N/A	3.8%	4.1%	5.4%	6.2%	5.4%
Total Black CVAP	2.7%	2.9%	3.0%	3.2%	5.1%	3.2%
Total Hispanic CVAP	11.0%	12.5%	11.9%	12.8%	21.4%	12.8%
Total Other CVAP	4.2%	2.4%	2.2%	2.2%	2.3%	2.2%
Total CVAP	100.0%	100.0%	100.0%	100.0%	100.0%	100.0%

SOURCE: Total Population and Voting Age Population summarized from 2020 Census PL 94-171 Redistricting Data at the block level.

Citizen Voting Age Population (CVAP) data was extrapolated from 2010 Block Group Data using the 2015-2019 American Community Survey

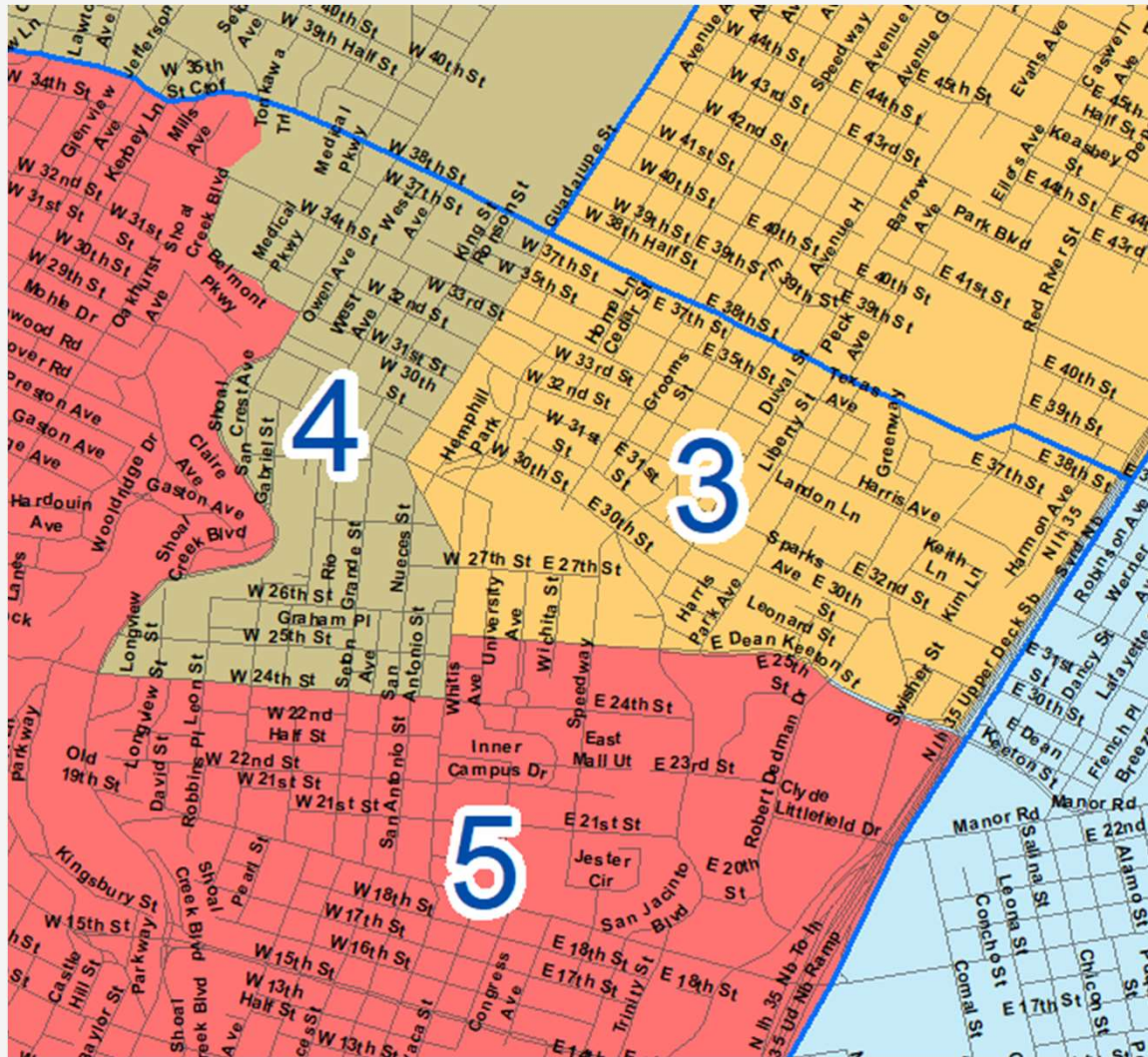
CVAP Change "Other" was calculated as follows: (2020CVAP-Other+2020CVAP-Asian)-(2010CVAP-Other) = Other

Plan 4 vs. Current – SMD 5



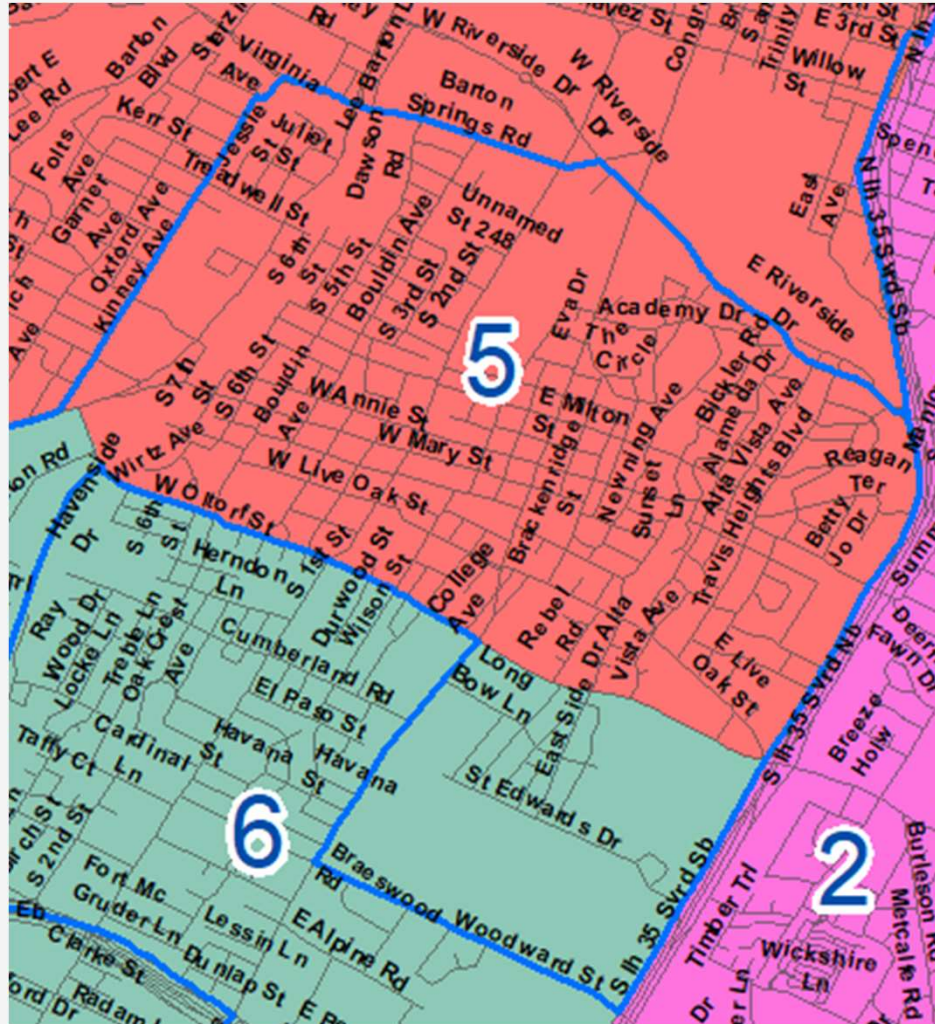
— Current Boundary

Plan 4 vs. Current - SMD 5



— Current Boundary

Plan 4 vs. Current – SMD 5



Key Proposed Changes to Single-Member District 5 in Plan 4

- SMD 5 loses population on the northern end of the district to SMD 3 & SMD 5
 - Northern boundary moves from 35th street to Dean Keeton between 35 and Guadalupe
 - Northern boundary moves from 35th to 24th St. between Guadalupe and Lamar Blvd.
- SMD 5 gains population on southeastern end (in the Travis Heights and Bouldin Creek neighborhoods) from SMD 6
 - Southern border moves south to Oltorf St. between 35 and Kinney Ave.

District 5 – Plan Comparison

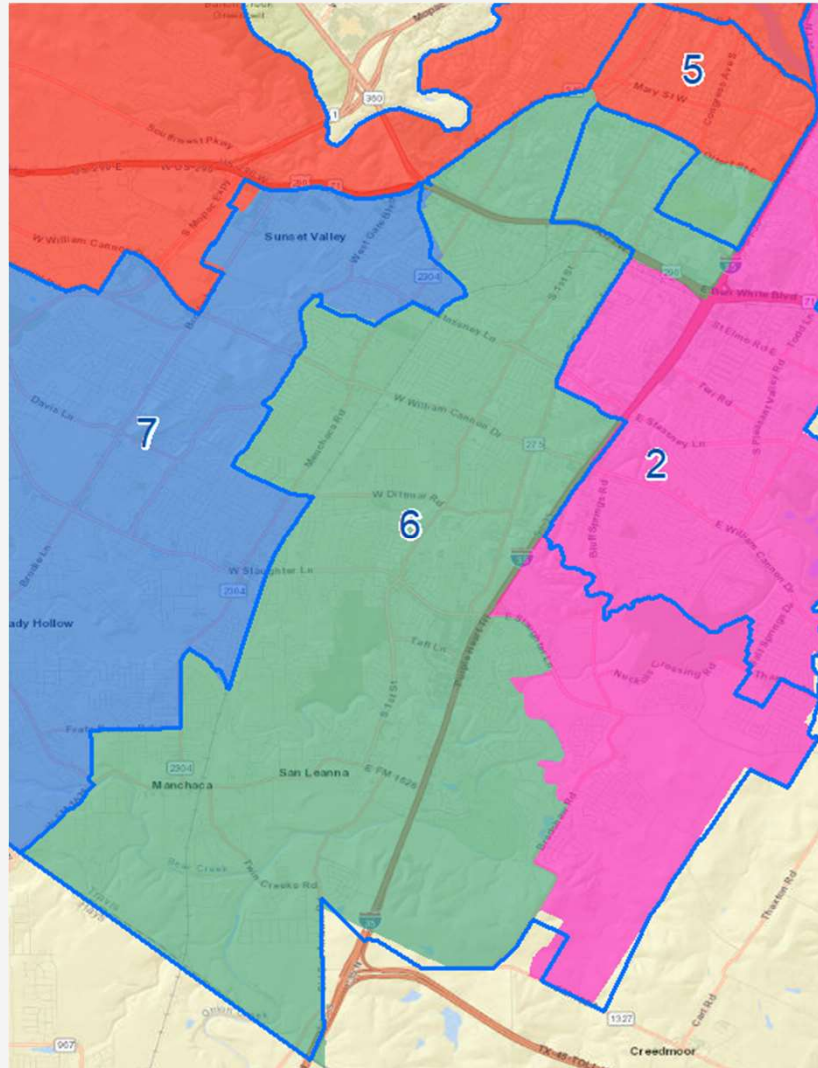
DISTRICT 5 - Plan Comparison						
Category	2010 Census	2020 Census	Plan 1	Plan 2	Plan 3	Plan 4
Population Totals						
Total Anglo Population	64,156	70,013	69,307	68,495	54,938	68,495
Total Asian Population	9,177	13,613	13,777	10,596	5,682	10,596
Total Black Population	2,304	3,331	3,390	3,159	4,862	3,159
Total Hispanic Population	12,184	17,266	17,742	16,408	35,623	16,408
Total Other Population	2,252	5,112	5,197	5,028	4,845	5,028
Total Population	90,073	109,335	109,413	103,686	105,950	103,686
Total Population Percentages						
Total Anglo Population	71.2%	64.0%	63.3%	66.1%	51.9%	66.1%
Total Asian Population	10.2%	12.5%	12.6%	10.2%	5.4%	10.2%
Total Black Population	2.6%	3.0%	3.1%	3.0%	4.6%	3.0%
Total Hispanic Population	13.5%	15.8%	16.2%	15.8%	33.6%	15.8%
Total Other Population	2.5%	4.7%	4.7%	4.8%	4.6%	4.8%
Total Population	100.0%	100.0%	100.0%	100.0%	100.0%	100.0%
Voting Age Population Percentages						
Total Anglo VAP	71.3%	64.4%	63.9%	67.0%	55.4%	67.0%
Total Asian VAP	10.7%	13.0%	13.1%	10.6%	5.5%	10.6%
Total Black VAP	2.6%	3.2%	3.2%	3.1%	4.5%	3.1%
Total Hispanic VAP	13.1%	15.4%	15.7%	15.1%	30.4%	15.1%
Total Other VAP	2.3%	4.1%	4.2%	4.2%	4.1%	4.2%
Total VAP	100.0%	100.0%	100.0%	100.0%	100.0%	100.0%
Citizen Voting Age Population Percentages						
Total Anglo CVAP	76.1%	71.4%	71.0%	73.6%	61.2%	73.6%
Total Asian CVAP	N/A	7.5%	7.2%	5.6%	3.3%	5.6%
Total Black CVAP	2.5%	4.3%	4.3%	4.2%	5.9%	4.2%
Total Hispanic CVAP	12.6%	14.6%	15.3%	14.4%	27.9%	14.4%
Total Other CVAP	8.8%	2.2%	2.2%	2.2%	1.7%	2.2%
Total CVAP	100.0%	100.0%	100.0%	100.0%	100.0%	100.0%

SOURCE: Total Population and Voting Age Population summarized from 2020 Census PL 94-171 Redistricting Data at the block level.

Citizen Voting Age Population (CVAP) data was extrapolated from 2010 Block Group Data using the 2015-2019 American Community Survey

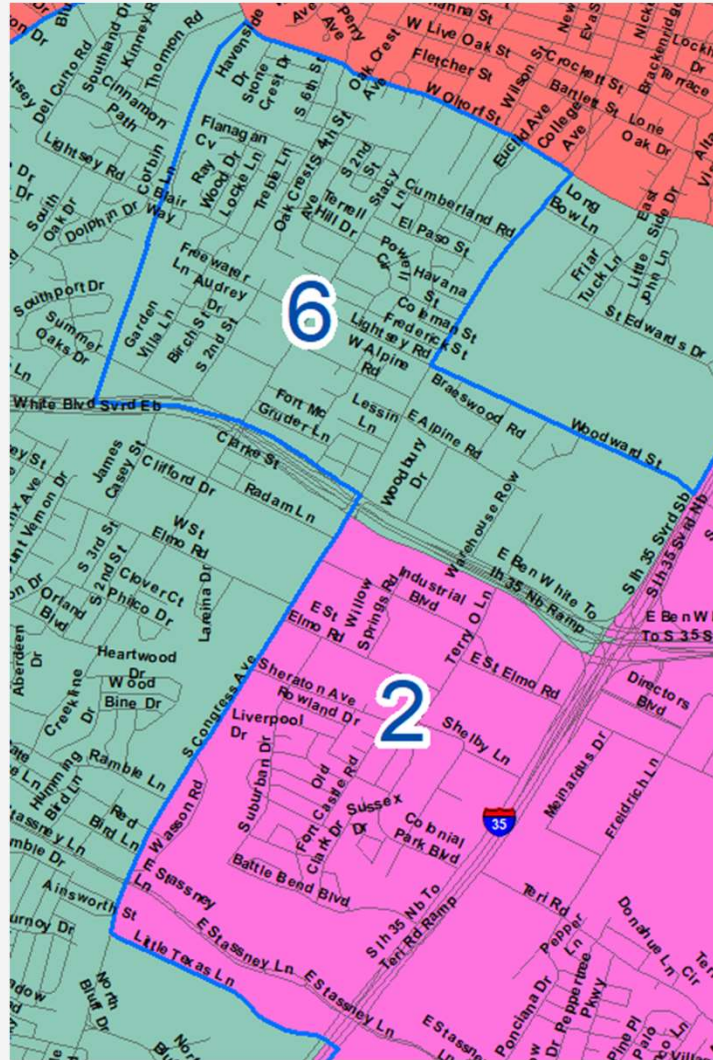
CVAP Change "Other" was calculated as follows: (2020CVAP-Other+2020CVAP-Asian)-(2010CVAP-Other) = Other

Plan 4 vs. Current – SMD 6



— Current Boundary

Plan 4 vs. Current – SMD 6



— Current Boundary

Key Proposed Changes to Single-Member District 6 in Plan 4

- SMD 6 gains population on the northeastern end of the district from SMD 2
- SMD 6 loses population in the Travis Heights and Bouldin Creek neighborhoods to SMD 5
 - Northern border moves south to Oltorf St. between 35 and Kinney Ave.
- SMD 6 loses population on the southeastern end of the district to SMD 2

District 6 – Plan Comparison

DISTRICT 6 - Plan Comparison						
Category	2010 Census	2020 Census	Plan 1	Plan 2	Plan 3	Plan 4
Population Totals						
Total Anglo Population	46,682	59,984	49,327	51,923	47,740	49,946
Total Asian Population	2,029	4,894	3,951	4,107	3,612	3,955
Total Black Population	4,378	6,544	5,947	5,505	4,586	5,290
Total Hispanic Population	38,938	47,251	43,417	40,785	43,696	39,086
Total Other Population	2,087	5,949	5,070	5,068	4,699	4,887
Total Population	94,114	124,622	107,712	107,388	104,333	103,164
Total Population Percentages						
Total Anglo Population	49.6%	48.1%	45.8%	48.4%	45.8%	48.4%
Total Asian Population	2.2%	3.9%	3.7%	3.8%	3.5%	3.8%
Total Black Population	4.7%	5.3%	5.5%	5.1%	4.4%	5.1%
Total Hispanic Population	41.4%	37.9%	40.3%	38.0%	41.9%	37.9%
Total Other Population	2.2%	4.8%	4.7%	4.7%	4.5%	4.7%
Total Population	100.0%	100.0%	100.0%	100.0%	100.0%	100.0%
Voting Age Population Percentages						
Total Anglo VAP	55.5%	51.7%	49.5%	51.6%	49.2%	51.6%
Total Asian VAP	2.3%	4.1%	3.8%	4.0%	3.7%	4.0%
Total Black VAP	4.3%	5.3%	5.6%	5.2%	4.5%	5.2%
Total Hispanic VAP	36.0%	34.5%	36.7%	34.8%	38.5%	34.7%
Total Other VAP	2.0%	4.4%	4.4%	4.4%	4.1%	4.4%
Total VAP	100.0%	100.0%	100.0%	100.0%	100.0%	100.0%
Citizen Voting Age Population Percentages						
Total Anglo CVAP	61.0%	58.5%	56.2%	58.1%	55.1%	58.0%
Total Asian CVAP	N/A	2.3%	2.5%	2.5%	2.5%	2.6%
Total Black CVAP	4.8%	5.2%	5.2%	5.1%	5.6%	5.1%
Total Hispanic CVAP	30.1%	31.7%	33.9%	32.2%	34.8%	32.2%
Total Other CVAP	4.1%	2.3%	2.2%	2.1%	2.0%	2.1%
Total CVAP	100.0%	100.0%	100.0%	100.0%	100.0%	100.0%

SOURCE: Total Population and Voting Age Population summarized from 2020 Census PL 94-171 Redistricting Data at the block level.

Citizen Voting Age Population (CVAP) data was extrapolated from 2010 Block Group Data using the 2015-2019 American Community Survey

CVAP Change "Other" was calculated as follows: (2020CVAP-Other+2020CVAP-Asian)-(2010CVAP-Other) = Other

Key Proposed Changes to Single-Member District 7 in Plan 4

- Plan 1 makes no changes to SMD 7

District 7 – Plan Comparison

DISTRICT 7 - Plan Comparison						
Category	2010 Census	2020 Census	Plan 1	Plan 2	Plan 3	Plan 4
Population Totals						
Total Anglo Population	61,774	65,756	65,756	65,756	52,776	65,756
Total Asian Population	5,123	7,326	7,326	7,326	6,846	7,326
Total Black Population	2,779	2,954	2,954	2,954	4,904	2,954
Total Hispanic Population	21,523	25,440	25,440	25,440	35,607	25,440
Total Other Population	2,302	5,781	5,781	5,781	5,256	5,781
Total Population	93,501	107,257	107,257	107,257	105,389	107,257
Total Population Percentages						
Total Anglo Population	66.1%	61.3%	61.3%	61.3%	50.1%	61.3%
Total Asian Population	5.5%	6.8%	6.8%	6.8%	6.5%	6.8%
Total Black Population	3.0%	2.8%	2.8%	2.8%	4.7%	2.8%
Total Hispanic Population	23.0%	23.7%	23.7%	23.7%	33.8%	23.7%
Total Other Population	2.5%	5.4%	5.4%	5.4%	5.0%	5.4%
Total Population	100.0%	100.0%	100.0%	100.0%	100.0%	100.0%
Voting Age Population Percentages						
Total Anglo VAP	69.3%	63.7%	63.7%	63.7%	52.6%	63.7%
Total Asian VAP	5.2%	6.8%	6.8%	6.8%	6.5%	6.8%
Total Black VAP	3.0%	2.9%	2.9%	2.9%	5.0%	2.9%
Total Hispanic VAP	20.7%	22.1%	22.1%	22.1%	31.7%	22.1%
Total Other VAP	1.8%	4.5%	4.5%	4.5%	4.3%	4.5%
Total VAP	100.0%	100.0%	100.0%	100.0%	100.0%	100.0%
Citizen Voting Age Population Percentages						
Total Anglo CVAP	73.4%	68.5%	68.5%	68.5%	59.8%	68.5%
Total Asian CVAP	N/A	4.0%	4.0%	4.0%	3.9%	4.0%
Total Black CVAP	3.0%	3.7%	3.7%	3.7%	4.5%	3.7%
Total Hispanic CVAP	18.8%	21.9%	21.9%	21.9%	29.6%	21.9%
Total Other CVAP	4.8%	1.9%	1.9%	1.9%	2.2%	1.9%
Total CVAP	100.0%	100.0%	100.0%	100.0%	100.0%	100.0%

SOURCE: Total Population and Voting Age Population summarized from 2020 Census PL 94-171 Redistricting Data at the block level.

Citizen Voting Age Population (CVAP) data was extrapolated from 2010 Block Group Data using the 2015-2019 American Community Survey

CVAP Change "Other" was calculated as follows: (2020CVAP-Other+2020CVAP-Asian)-(2010CVAP-Other) = Other

Process & Timeline

Process & Timeline

- Hire a demographic and legal team – October 2021
- Team briefs Board on timelines/dates and process – November 11, 2021
- Board provides input on how to solicit board input & role of legal team— January 13
- Board provides input on how to solicit public input – January 13
 - Public hearings are a must
 - Soliciting input from minority leaders is a must
- Board reviews timeline – January 13

Process & Timeline

- ✓ Board receives Redistricting 101 Overview – February 10
- ✓ Team briefs Board on all relevant census, population, demographic and election data – February 10
- ✓ Board reviews public input proposal – February 10
- ✓ Public education materials released on website and in community – early March
- ✓ Board receives public input on redistricting criteria
 - Survey results on criteria on district website
 - Public comment at Board meetings
- ✓ Board adopts redistricting criteria – March 10
- ✓ Demographer drafts and presents initial proposed map based on statutory criteria to Board; Board and public provide input on initial proposed map – March 10

Process & Timeline

- Two virtual town halls for community – Monday, March 28 and Tuesday, April 12
- Survey on proposed map changes released on website and in community forums – mid- to late March
- Board and public provide input on initial proposed map – March 24
- Weekly meetings between legal & demographic team, Board President or other members, and district liaison – March through April
- Trustee-led community meetings in districts (virtual and in-person) – March, April, & May

Process & Timeline

- Trustee-led community meetings in districts (virtual and in-person) – March, April, & May
- Legal and demographic team holds one-on-one meetings with Trustees on Plan #2 – April
- Present additional map option(s) based on continued community and Trustee input; Board and public provide input on map options – May 5
- Present proposed final map based on continued community and Trustee input; Board reviews written analysis of final plan which addresses how criteria met; Board and public provide input on proposed final map – May 19

Process & Timeline

- Board adopts final plan through resolution –May 19 or June 15
- Special Board meeting – May or June
- First day to file for place on ballot – July 23
- Deadline to adopt redistricting plan – August 10
- Deadline to file for a place on the ballot; deadline to order election – August 22
- Election Day – November 8

UPCOMING KEY DATES

**Entire Month
of May**

**Continue holding
community
meetings and one-
on-one meetings**

MAY 19TH

**BOARD
REGULAR
VOTING
MEETING**

THANK YOU!

