

Educational Suitability Summary Report

McCallum High School

Date: 01/28/2021

Score 50% Unsatisfactory

McCallum High School currently serves an enrollment of approximately 1,840 students in north central Austin. The campus serves as AISD's Fine Arts Academy and is open to all students in AISD who wish to attend, provided they are accepted through the admissions process. The original campus was built in 1953, with a new stand-alone addition constructed in 2011 to serve the Fine Arts Academy. The campus consists of approximately 216,000 square feet on 31 acres.

In addition to the Fine Arts Academy, McCallum offers general education coursework and CTE programs including Engineering, Accounting, Animation, Commercial Photography, A/V Production, Graphic Design and Exercise Science. The school has a robust athletics department, and the current facility size is creating issues in holding/scheduling games, especially in the main gymnasium.

The design of the original building provides access to daylight for all the exterior-facing studios, however the building lacks flexibility and does not allow for the types of spaces needed to teach classes at the current AISD standards. Studios are set up for rows of desks facing a single instructor and lack the infrastructure or flexible furniture to allow for a variety of seating arrangements.

Interview Overview

The interview was conducted via online conference call with Principal Nicole Griffith, Assistant Principal Gabe Reyes, Fine Arts Academy Director Heather Ramsay and Building Manager Camille Nix. Athletics Department Chair Tom Gammerdinger and CTE Department Chair Audrea Moyers joined to discuss conditions specific to their departments. McCallum High School has an important historical legacy, and there are artifacts that the school would like to display, including the Knight tile mural at the main office donated by the class of 1969 as well as murals on the building exterior and in the courtyard.

The interview highlighted many programs that are not in suitable spaces. McCallum is the designated Fine Arts magnet school for the district, yet two of its majors (guitar and piano) are housed in portables. There is no designated facility for the dance program, though it is slated to be added in 2022 with funding from a prior bond. The Fine Arts Academy needs space to expand to increase its course offerings, including a dedicated drama scene shop, a dedicated computer lab, and dedicated studios for music theory, music history and art history.

Athletics is a large area of concern. The competition gym spectator seating is inadequately sized and is located on one side of the gym, which creates problems when seating spectators from both schools together. They need to be able to run games concurrently to keep games from running too late, but the competition gym is the only gym with space for seating, and spectators for games in the practice gym end up standing against the walls.

CTE is another large area of concern. All but one of the programs are in spaces of inadequate size

and infrastructure. The campus currently offers programs in Business, Engineering, Accounting, Animation, Commercial Photography, A/V Production, Graphic Design and Exercise Science.

The school mostly supports the 6 C's through programming. The 6 C's are being hindered by many aspects of the school's infrastructure, including lack of collaboration space/flex space. The studios do not support any configuration but a lecture setup and there is no breakout space for group projects. The school also lacks teacher collaboration spaces (e.g., dedicated PLCs).



Assessment Findings

The Educational Suitability Assessment of McCallum High School earned a 50% overall score and places the campus in a category of Unsatisfactory. The assessment consists of seven General Building categories and eight Academic categories to determine areas that need more attention.

Unsatisfactory Categories (36-50%):

General Building

Score is unsatisfactory.

The cafeteria, gym and library cannot be accessed without allowing full school access, and there is no dedicated community meeting room. The general appearance of the school is aged, but not in disrepair.

Security

Score is unsatisfactory.



Environmental Quality

Score is unsatisfactory.

Sound from corridors and adjacent studios is audible in studios. Artificial lighting is adequate in studios in newer building, and poor quality in original building. There is evidence of rats and raccoons in some locations as well as a recurring sewage odor in one wing of the building.

Controllability of Systems

Score is unsatisfactory.

Each studio has individual temperature controls but most do not work. There is very little HVAC control and many windows do not open. Shades are provided to control natural light but are in poor condition. Lighting controls in studios are not dimmable; alternating rows of lights switch off when dimmed lighting is desired.

Academic & Learning

Score is unsatisfactory.

Majority of studios are too small and lack adequate storage space. Academic neighborhoods do not have any breakout rooms or open collaboration spaces and do not provide opportunities for students to work independently or to collaborate in groups of varying sizes. The campus lacks a dedicated maker space.

CTE and Career Connected Learning

Score is unsatisfactory.

Majority of CTE programs do not have adequate studio, lab or storage space for a campus of this size.

Food Services

Score is unsatisfactory.

The serving line is inadequately sized to be functional, and the food service manager's desk is located within the kitchen. The designated manager's office is currently being used as a storage closet.

Media Resources

Score is unsatisfactory.

The library has limited access and lacks transparency to the rest of the school. There are no breakout rooms or flexible furniture to support group study nor are there quiet spaces for individual study located within the library.

Technology

Score is unsatisfactory.

There is one type of instructional technology present in each studio. Studios located in the original building lack adequate outlets to support digital devices. There is no digital media signage in the reception area.

Administration Spaces

Score is unsatisfactory.

[REDACTED]. The administrative area lacks acoustic privacy in spaces that require it. The conference room for parent use is located toward the back of the administrative suite and is difficult to find. The admin spaces are not designed to encourage collaboration. The registrar and data processors area is not located in main office. There is not an adequate wait area for parents, and it does not have a welcoming feel.

Average Categories (51-65%):**Furniture, Fixtures, Equipment**

Score is average.

Furniture is not new but is in good condition. The furniture is reconfigurable but is cumbersome to move. Some studios have separate tables and chairs, but other studios are furnished with chair desks combinations.

Visual and Performing Arts

Score is average.

Orchestra rehearsal space is too small to function well. Dance spaces are small and located in spaces borrowed or shared with other programs. A new dance studio was approved with the 2017 bond program. Two specialty arts programs are currently housed in a portable.

Athletics and Wellness

Score is average.

Exterior fields are not in good condition and require upkeep from the coaches. There is no site lighting, which makes practices difficult. The campus lacks a swimming pool but has an agreement to share facilities with the University of Texas. The competition gym is undersized, and the audience space is too small and is located all on one side of the gym. The adjacent practice gym is regularly used for competition to allow better scheduling of games but has no audience space. Neither gym has access from the exterior of the building.

Satisfactory Categories (66-80%):

Exterior

Score is satisfactory.

Buses, cars and pedestrians are separate, but the stack space is small due to site being landlocked. Signage is visible but not in good condition. The school notes parking is not adequate and students have to cross the road to access the main parking lot, which is a safety concern.

Outdoor Learning and Activity

Score is satisfactory.

Outdoor studios include one small solar studio. One larger covered area is provided with fixed tables and attached seats but little support for a true learning space; no power or screens provided, and seating is not ideal for learning. The furniture prevents a class or science lab from being held there. The learning garden is disconnected from other outdoor learning areas and in poor condition. No rain garden, rain collection cisterns or nature trails are present.

Supporting Photographs

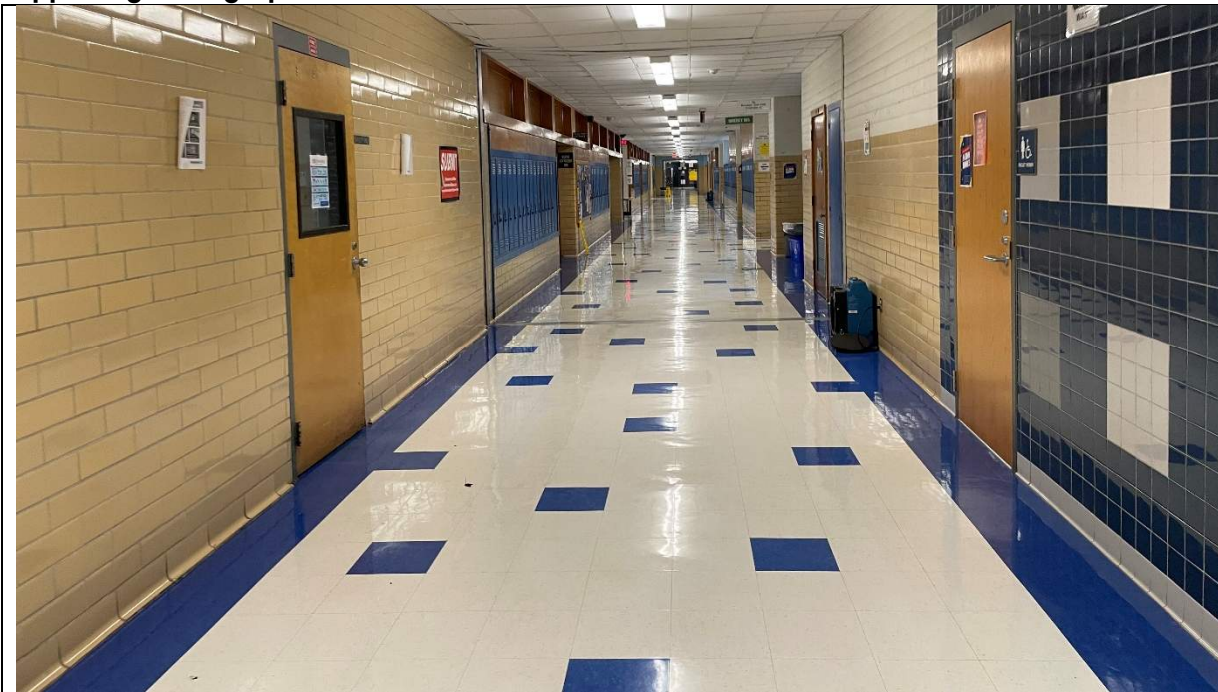


Exterior of school is dated, but in good condition.



Main Entry is small and has a low ceiling and dated lighting.

Supporting Photographs



Corridors are adequate width for student circulation.



Outdoor solar studio.

Supporting Photographs



Outdoor Courtyard: Not directly accessible from studios and not accessible from outside building, so mower must be brought through school to maintain courtyard. No shade and inadequate seating for outdoor learning.



Media Center: Library in good condition, but most furniture is not reconfigurable or easily movable. No breakout rooms or individual study spaces.

Supporting Photographs

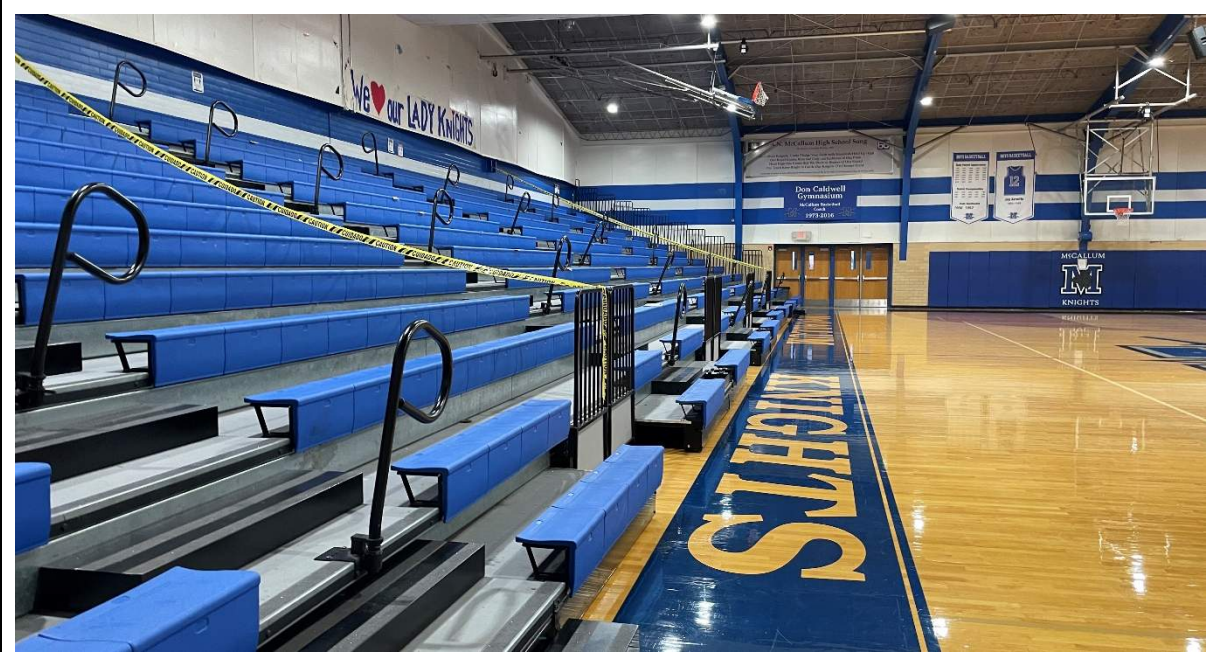


Typical studio in original building. No furniture flexibility or opportunity to work in small groups, lack of storage. Blinds are inconsistent within studios.

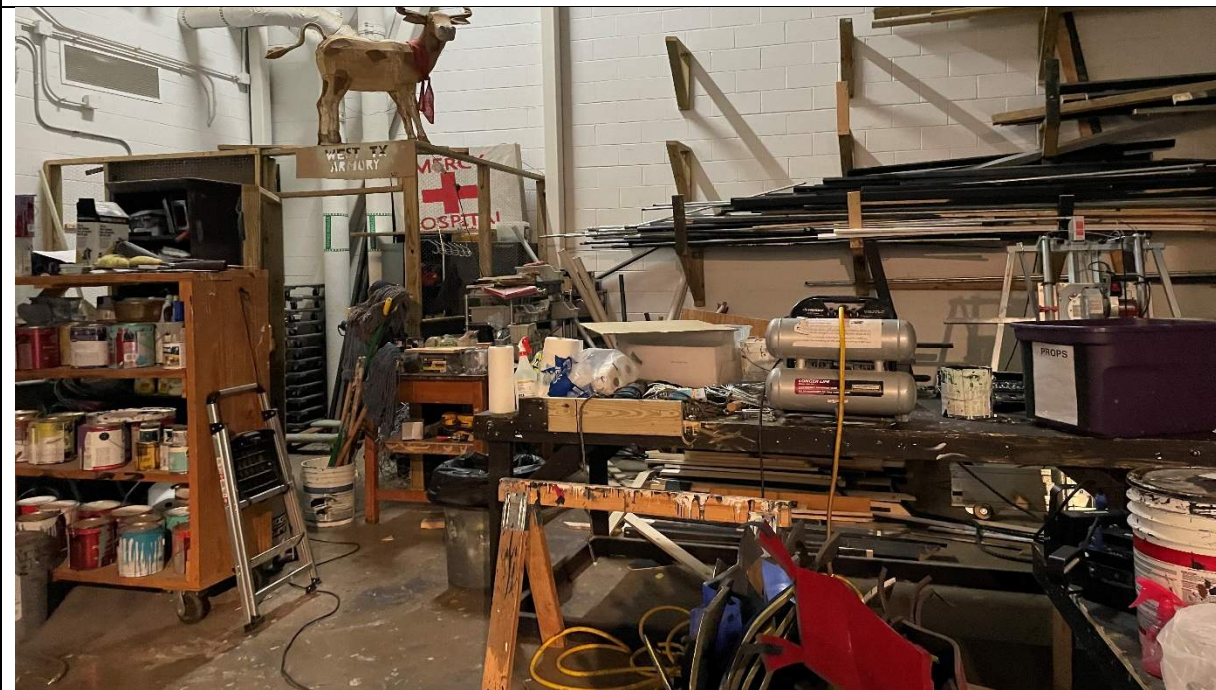


Science Lab Renovation: Adequate space, storage and prep area.

Supporting Photographs



Competition Gym: Spectator bleachers located on one side of gym only.



Backstage at MAC: Lacks dedicated scene shop and storage.

Supporting Photographs



Wrestling gym shares space with dance program, drill team, cheer and sometimes piano.



Outdoor Studio: Generous size and well shaded. Furniture not flexible, no visual display board.



Perkins&Will

Austin ISD Educational Suitability Assessment Criteria

General Building

School Name

McCallum HS

Walk Attendees:

Kristen Klein, Angela Whitaker-Williams

Date:

1/20/2021

1 - Exterior		1	2	3	4	5	N/A	8.75	69%	
1.1	Does the site permit desirable separation of vehicular, bus and pedestrian traffic?			3				Comments	1.00	3.00
	1 Very unsatisfactory - Bus, car and pedestrian all happen at the same location									
	2 Unsatisfactory - Cars and buses mix, pedestrians are separated									
	3 Average - Buses, cars, and pedestrians are separate but stack space is small									
	4 Satisfactory - Buses, cars, and pedestrians are separate but drop off does not have a canopy or a holding place like a commons or cafeteria									
	5 Very satisfactory - Buses, cars, and pedestrians are separate and drop off area has a canopy and destination									
	N/A Does not apply									
1.2	Is the building easily identified with appropriate signage and community wayfinding?				4			Comments	0.25	1.00
	1 Very unsatisfactory - Campus has no signage / wayfinding									
	2 Unsatisfactory - Signage/wayfinding is faded/hidden									
	3 Average - Signage / wayfinding visible but not apparent									
	4 Satisfactory - Signage / wayfinding is visible but not good condition									
	5 Very satisfactory - Signage and wayfinding is visible and easy to use									
	N/A Does not apply									

1 - Exterior (cont.)		1	2	3	4	5	N/A			
1.3	Is the dumpster accessible for trash / compost disposal?				4			Comments	0.50 2.00	
1	Very unsatisfactory - No compost present, route has obstacles (stairs, curbs, barriers) to dumpster									
2	Unsatisfactory - Compost is present. Route has obstacles to dumpster									
3	Average - Compost is present (<100' to cafeteria), Route to dumpster is free and clear but the two are not directly adjacent.									
4	Satisfactory - Compost and dumpster are directly adjacent and route is barrier free									
5	Very Satisfactory - Compost and dumpster are directly adjacent and route is barrier free. Dumpster are shaped / positioned so people of all heights can access it.									
N/A	Does not apply									
2 - Outdoor Learning and Activity		1	2	3	4	5	N/A			
2.1	Are outdoor studios and support spaces appropriately configured per the ed spec?			3				Comments	10.00 80% 1.00 3.00	
1	Very unsatisfactory - No dedicated outdoor studios									
2	Unsatisfactory - Too small, poor condition, disconnected from learning spaces, no flexibility, no shade provided									
3	Average - Adequate size, adequate condition, needs some renovations or updates to function well, 50% or less shade coverage over studio area									
4	Satisfactory - Good size, good condition, connected to learning spaces, good flexibility, more than 50% shade coverage over studio area									
5	Very satisfactory - Generous size, excellent condition, connected to learning spaces, excellent flexibility, full shade coverage over studio area									
N/A	Does not apply									
2.2	Are active playgrounds (elementary only) and support spaces configured per the ed spec?						N/A	Comments	0.00 0.00	
1	Very unsatisfactory - No dedicated active playground									
2	Unsatisfactory - Too small, poor condition, no shade provided									
3	Average - Adequate size, adequate condition, needs some renovations or updates to function well, 50% or less shade coverage over play structure									
4	Satisfactory - Good size, good condition, more than 50% shade coverage over play structure									
5	Very satisfactory - Generous size, excellent condition, full shade coverage over play structure									
N/A	Does not apply									

2 - Outdoor Learning and Activity (cont)		1	2	3	4	5	N/A				
2.3	Are gardens and support spaces appropriately configured per the ed spec? (evaluation on infrastructure not condition of plants)		2						Comments	0.00	0.00
1	Very unsatisfactory - No dedicated gardens							Monitoring answer, does not affect score for Outdoor Learning and Activity.			
2	Unsatisfactory - Too small, poor condition, disconnected from learning spaces, no flexibility, no accessible water source										
3	Average - Adequate size, adequate condition, needs some renovations or updates to function well, water source is difficult to access										
4	Satisfactory - Good size, good condition, connected to learning spaces, good flexibility, water source is accessible with 100 ft hose										
5	Very Satisfactory - Generous size, excellent condition, connected to learning spaces, excellent flexibility, water source is less than 50ft from the garden or has irrigation										
N/A	Does not apply										
2.4	Are the rain gardens and/or cisterns appropriately configured per the ed spec?	1							Comments	0.00	0.00
1	Very unsatisfactory - No rain gardens or cisterns							Monitoring answer, does not affect score for Outdoor Learning and Activity.			
2	Unsatisfactory - Too small, poor condition, not functioning, disconnected										
3	Average - Adequate size, adequate condition, is connected, needs some renovations or updates to function well										
4	Satisfactory - Good size, good condition, functions properly										
5	Very Satisfactory - Generous size, excellent condition, exceptional functionality, connected to learning spaces, educational signage provided										
N/A	Does not apply										
2.5	Does the school have animal husbandry? (optional)	1							Comments	0.00	0.00
1	No										
5	Yes										
2.6	Does the school have nature loop trails? (optional)	1							Comments	0.00	0.00
1	No										
5	Yes										
2.7	Does the school have a learning pond? (optional)	1							Comments	0.00	0.00
1	No										
5	Yes										
2.8	Does the school have a grass play field and walking trail?					5			Comments	1.00	5.00
1	No										
5	Yes										

3 - General Building		1	2	3	4	5	N/A	11.25	36%
3.1	Are interior circulation routes wide enough to safely and effectively accommodate student movement?				4			Comments	0.50 2.00
1	Very unsatisfactory - Primary circulation is 5'-0" to 6'-0" wide	The hallways range in size from 8 to 12 feet. This is problematic for the school. The principal notes: The hallways are jam packed, especially in center hall. If there is any incident in the hallway it is very difficult to get around, or get to a student in need. The design of the school is such that all students are funneled into one main hallway, which is not big enough to handle. It is especially crowded on bad weather days. We have to have a 6-minute passing period because otherwise students cannot get to class on time.							
2	Unsatisfactory - Primary circulation is 6'-0" to 7'-0" wide								
3	Average - Primary circulation is 7'-0" to 8'-0" wide								
4	Satisfactory - Primary circulation is 8'-0"-10'-0" wide								
5	Very satisfactory - Primary circulation is 10'-0"+ wide								
N/A	Does not apply								
3.2	Are community use areas arranged so that the school can allow night functions without full school access?	1						Comments	0.75 0.75
1	Very unsatisfactory - Cafeteria, gym, and library cannot be accessed after hours								
2	Unsatisfactory - Only one of the public spaces (Cafeteria, Gym and Library) can be accessed from parking and secured after hours								
3	Average - Only two of the public spaces can be accessed from parking and secured after hours								
4	Satisfactory - All of the public spaces can be accessed from parking and secured from the rest of the building but not individually								
5	Very satisfactory - Cafeteria, gym, and library can be accessed from parking and locked off from rest of campus for night/evening use with their own entrance								
N/A	Does not apply								
3.3	Is there a community room that is a dedicated meeting space outside of school function?	1						Comments	0.75 0.75
1	Very unsatisfactory - No dedicated community room								
2	Unsatisfactory - Community room but within school function, no access after school hours								
3	Average - Community room, moderate size, but need some renovations or updates to function well								
4	Satisfactory - Community room, good size /layout, meets needs /functions well								
5	Very Satisfactory - Community room, generous size, nice condition, functions appropriately outside of school function								
N/A	Does not apply								
3.4	Does the general appearance of the school convey pride for the students and community?		2					Comments	0.25 0.50
1	Very unsatisfactory - General appearance is poor								
2	Unsatisfactory - General appearance is aged but ok								
3	Average - General appearance is good								
4	Satisfactory - General appearance shows pride in campus and student works								
5	Very satisfactory - General appearance shows pride in campus and student works and is welcoming to the community								
N/A	Does not apply								

5 - Environmental Quality		1	2	3	4	5	N/A	25.00	48%
5.1	How are acoustics in studios in general?		2					Comments	1.00 2.00
1	Very unsatisfactory - Recognized word/sound from adjacent studio/corridor								
2	Unsatisfactory - Audible sound from adjacent studio/corridor								
3	Average - Slight sound from outside room								
4	Satisfactory - Walls to deck insulated only white noise from mechanical system								
5	Very satisfactory - Able to hear quiet speaking from across the room								
N/A	Does not apply								
5.2	Is the studio artificial lighting adequate quality?			3				Comments	1.00 3.00
1	Very unsatisfactory - Sporadic lights work, glare, less than 20 FC	Poor in older building, good in new building.							
2	Unsatisfactory - 10-19 FC or serious glare								
3	Average- 20-29 FC minor glare								
4	Satisfactory - 30-39 FC and no glare								
5	Very satisfactory - 40+ FC and no glare								
N/A	Does not apply								
5.3	Is there access to natural light in studios?			3				Comments	1.00 3.00
1	Very unsatisfactory - No learning spaces have natural light	All studios on exterior walls have good natural light with blinds.							
2	Unsatisfactory - 1-25% of learning spaces have natural light or windows are too small to let in light								
3	Average - 26-50% of learning spaces have natural light								
4	Satisfactory - 51-75% of learning spaces have natural light								
5	Very satisfactory - 76-100% of learning spaces have natural light								
N/A	Does not apply								
5.4	Is there access to outside views from learning spaces?			3				Comments	1.00 3.00
1	Very unsatisfactory - No learning spaces have views								
2	Unsatisfactory - 1-25% of learning spaces have views or windows are too small to see out								
3	Average - 26-50% of learning spaces have views								
4	Satisfactory - 51-75% of learning spaces have views								
5	Very satisfactory - 76-100% of learning spaces have views								
N/A	Does not apply								

5 - Environmental Quality (cont.)		1	2	3	4	5	N/A		
5.5	Does the building have odor or pest problems?	1						Comments	1.00 1.00
1	Very unsatisfactory - Evidence of both pests and odors								Rats and raccoons. Major termite infestation.
2	Unsatisfactory - Evidence of pests or odors								
3	Average - Limited evidence of pests, no odors								
4	Satisfactory - No evidence of pests / odors, school cleanliness in good condition								
5	Very Satisfactory - No evidence, school cleanliness in excellent condition								
N/A	Does not apply								
6 - Controllability of Systems		1	2	3	4	5	N/A		12.50 44%
6.1	Does the studio thermostat allow for individual control?	1						Comments	0.50 0.50
1	No	Thermostats present but do not function in many classrooms.							
5	Yes								
6.2	Are shades provided to control natural light in learning spaces?			3				Comments	1.00 3.00
1	Very unsatisfactory - No, windows are covered with boards/paper								Principal's note - Most of the shades are in some sort of disrepair. Teachers resort to hanging up black sheets or butcher paper so students can see the screen.
2	Unsatisfactory - No, windows have no light control								
3	Average - Yes, but poor condition blinds								
4	Satisfactory - Yes, blinds								
5	Very satisfactory - Blackout shades								
N/A	Does not apply								
6.3	What is the quality of lighting controls in the studios?		2					Comments	1.00 2.00
1	Very unsatisfactory - Single switch only per room								
2	Unsatisfactory - Alternating rows switch off								
3	Average - Alternating lamps in single fixtures switch off								
4	Satisfactory - Tri level switching								
5	Very satisfactory - Dimmable								
N/A	Does not apply								

7 - Furniture, Fixtures & Equipment		1	2	3	4	5	N/A	18.75	59%
7.1	What is the current condition of the furniture?				4			Comments	0.75 3.00
1	Very unsatisfactory - Damaged or broken, non-functioning								
2	Unsatisfactory - Torn/ bent/ wrong size								
3	Average - Scratched/dented/marked								
4	Satisfactory - Not new, but sturdy and clean								
5	Very satisfactory - New								
N/A	Does not apply								
7.2	Are a variety of furniture types being accommodated throughout the school - learning commons, dining commons, other multi-use spaces?		2					Comments	1.00 2.00
1	Very Unsatisfactory - Same furniture used in all spaces								
2	Unsatisfactory - Furniture variety in one multi-use space								
3	Average - Furniture variety in more than one multi-use space								
4	Satisfactory - All multi-use spaces have greater than one type of furniture								
5	Very satisfactory - All multi-use spaces have greater than two types of furniture								
N/A	Does not apply								
7.3	How well does furniture accommodate rapid reconfiguration of a space?			3				Comments	1.00 3.00
1	Very Unsatisfactory - Furniture is fixed or very heavy								
2	Unsatisfactory - Furniture does not allow desks to be configured as individuals, small groups, or large groups								
3	Average - Mix of furniture that can reconfigure but is cumbersome to move								
4	Satisfactory - Furniture is flexible for multiple configurations of space								
5	Very satisfactory - Furniture is flexible for multiple configurations of space, easy to move and stack								
N/A	Does not apply								
7.4	Is the furniture ergonomic and size appropriate for grade level?			3				Comments	1.00 3.00
1	Very unsatisfactory - Desk with attached chair combinations too small for grade level	Mixture of loose tables and charis and Chair desks combos in older building.							
2	Unsatisfactory - Desk with attached chair combinations								
3	Average - Mix of studios with tables/loose chairs and desks with fixed seats								
4	Very satisfactory - Tables with loose chairs								
5	Very satisfactory - Tables with loose chairs that allow students to be active								
N/A	Does not apply								

Zero Waste		1	2	3	4	5	N/A	5.00	80%
Do studios and corridors have blue recycle bins with bilingual instructions and/or image sorting instructions?		1						Comments	0.50 0.50
1	Very unsatisfactory - There are no recycling and landfill bins and signage are sparse or infrequent, OR there are only landfill bins with no recycling bins.							A score for this category is being recorded, but this category is not calculated in the overall ESA average.	
2	Unsatisfactory - Bins and signage are sparse or infrequent and/or lack clear signage.								
3	Average - 50% of corridors and studios have both a landfill bin and a recycle bin in an accessible location. The containers have clear signage.								
4	Satisfactory - 75% of studios and corridors have a visible landfill and recycle collection containers in an accessible location. The containers have clear signage.								
5	Very satisfactory - All studios / corridors (100%) have visible landfill and recycle collection containers in accessible locations. The containers have clear signage, and the style and format is consistent and uniform across campus.								
N/A	Does not apply								
Does the cafeteria (or wherever meals are served) have at least one of each: green compost bin, blue recycle bin, and landfill bin? Are the bins labelled clearly with bilingual and/or image sorting?			2			5		Comments	0.50 3.50
1	Very unsatisfactory- There may be landfill bins, but there are no compost and/or recycle bins. There is not clear sorting signage.							A score for this category is being recorded, but this category is not calculated in the overall ESA average.	
2	Unsatisfactory- Recycle, landfill, and compost bins are present, but the bins are scattered and no co-located next to one another. Signage is absent or inconsistent.								
3	Average- There is at least one waste station with all three bins (recycle, compost, landfill) located with close proximity to one another. The signage is visible and consistent.								
4	Satisfactory- There are several waste stations as described above								
5	Very Satisfactory - There are several waste stations as described above, and additional signage in the cafeteria that encourages recycling/composting.								
N/A	Does not apply								



Austin ISD Educational Suitability Assessment Criteria

Academics - Middle School / High School

School Name

McCallum HS

Walk Attendees:

Kristen Klein, Angela Whitaker-Williams

Date:

1/20/2021

8 - Academics & Learning		1	2	3	4	5	N/A	65.00	43%	
8.1	Are studios appropriately configured per the ed spec?		2					1.00	2.00	
1	Very unsatisfactory - Too small, no flexibility, disconnected									
2	Unsatisfactory - Too small, only one area for all teaching methods, limited flexibility, disconnected									
3	Neutral - Adequate size, multiple areas for different teaching methods, adequate flexibility, limited transparency and connection to other studios and shared learning spaces, needs updates or renovations to function well.									
4	Satisfactory - Good size, multiple areas for different teaching methods, good flexibility, good transparency and connection to other studios and shared learning spaces									
5	Very Satisfactory - Generous size, multiple areas for different teaching methods, excellent flexibility, generous display area and visual teaching tools, excellent transparency and connection with other studios and shared learning spaces									
N/A	Does not apply									
8.2	Do studios have appropriate support spaces such as storage per the ed spec?		2					1.00	2.00	
1	Very unsatisfactory - None provided									
2	Unsatisfactory - Too small, disconnected, poor condition									
3	Neutral - Adequate size, average condition, needs updates or renovations to function well									
4	Satisfactory - Good size, connected, good condition									
5	Very Satisfactory - Generous size, connected, excellent condition									
N/A	Does not apply									

8 - Academics & Learning (cont.)		1	2	3	4	5	N/A			
8.3	Do typical learning neighborhoods have small and medium (high school only) group rooms and open collaboration space?	1						Comments	1.00 1.00	
1	Very unsatisfactory - No breakout rooms or open collaboration spaces are provided									
2	Unsatisfactory - Too small or too few, poor condition, no flexibility, lacks visual connection to learning neighborhood, poor acoustic privacy									
3	Average - Adequate size, adequate condition, needs some renovations or updates to function well									
4	Satisfactory - Good size, good condition and flexibility, transparency and connection to learning neighborhood, acoustic privacy									
5	Very Satisfactory - Generous size, excellent condition and flexibility, transparency and connection to learning neighborhood, acoustic privacy									
N/A	Does not apply									
8.4	Are Science Labs and support spaces appropriately configured per the ed spec?		2					Comments	1.00 2.00	
1	Very unsatisfactory - No dedicated science room							Some labs recently renovated and have good support (only 3 out of 11). The others are original, do not meet spec, and have no support spaces.		
2	Unsatisfactory - Too small, poor condition, no connected support space									
3	Average - Adequate size, adequate condition, needs some renovations or updates to function well									
4	Satisfactory - Good size, good condition, connected support spaces									
5	Very Satisfactory - Generous size, excellent condition, connected support spaces									
N/A	Does not apply									
8.5	Are Maker Spaces and support spaces appropriately configured per the ed spec? (cross reference with CTE below)	1						Comments	1.00 1.00	
1	Very unsatisfactory - No dedicated maker spaces									
2	Unsatisfactory - Too small, poor condition, disconnected from learning spaces, no flexibility									
3	Average - Adequate size, adequate condition, needs some renovations or updates to function well									
4	Satisfactory - Good size, good condition, connected to learning spaces									
5	Very Satisfactory - Generous size, excellent condition, connected to learning spaces									
N/A	Does not apply									

8 - Academics & Learning (cont.)		1	2	3	4	5	N/A			
8.6	Is there a Professional Learning Center in the learning neighborhood?	1						Comments	1.00 1.00	
1	Very unsatisfactory - No dedicated space for Professional Learning Center									
2	Unsatisfactory - Too small, poor condition, disconnected									
3	Average - Adequate size, adequate condition, needs some renovations or updates to function well									
4	Satisfactory - Good size, good condition, connected									
5	Very Satisfactory - Generous size, excellent condition, connected									
8.7	Are there adequate places to display the evidence and artifacts of learning (both 2D and 3D)?			3				Comments	1.00 3.00	
1	Very unsatisfactory - No dedicated space									
2	Unsatisfactory - Too small, non-dedicated, poor condition									
3	Average - Adequate size, adequate condition, needs updates or renovations to function well									
4	Satisfactory - Good size, good condition									
5	Very Satisfactory - Generous size, excellent condition									
N/A	Does not apply									
8.8	Does the building / learning neighborhood provide adequate opportunities for students/teachers to collaborate in varying group sizes?	1						Comments	1.00 1.00	
1	Very unsatisfactory - No space to support collaboration in various sizes.									
2	Unsatisfactory - Too small, inflexible, only one option, does not support a variety of group sizes									
3	Average - Adequate space for collaboration, needs updates or renovations to function well.									
4	Satisfactory - Good size, good condition, multiple options to support a variety of group sizes									
5	Very Satisfactory - Generous size, excellent condition, multiple options to support a variety of group sizes									
N/A	Does not apply									
8.9	Does the building provide opportunities for informal interaction?		2					Comments	1.00 2.00	
1	Very unsatisfactory - No space									
2	Unsatisfactory - Too small, poor condition, layout and furnishings do not support informal interaction well									
3	Average - Adequate size and condition, needs updates or renovations to function well.									
4	Satisfactory - Good size, good condition, layout and furnishings support informal interactions									
5	Very Satisfactory - Generous size, excellent condition, layout and furnishings support informal interactions									
N/A	Does not apply									

8 - Academics & Learning (cont.)		1	2	3	4	5	N/A			
8.10	Does the building provide adequate opportunities for students to work independently?	1						Comments	1.00 1.00	
1	Very unsatisfactory - No breakout rooms/small study spaces									
2	Unsatisfactory - Too small, poor condition, no acoustic privacy, only one space for independent work, disconnected from learning neighborhood									
3	Average - Adequate size and condition, needs updates or renovations to function well.									
4	Satisfactory - Good size and condition, acoustic privacy, variety of independent work space options, connected to learning neighborhood									
5	Very Satisfactory - Generous size, excellent condition, acoustic privacy, variety of independent work space options, connected to learning neighborhood									
N/A	Does not apply									
Special Education										
8.11	Are Special Education spaces appropriately configured per the ed spec?			3				Comments	1.00 3.00	
1	Very unsatisfactory - Too small, no flexibility, disconnected							Small resource rooms not adequate but life skills room well supported.		
2	Unsatisfactory - Too small, only one area for all teaching methods, limited flexibility, disconnected									
3	Neutral - Adequate size, multiple areas for different teaching methods, adequate flexibility, limited transparency and connection to other studios and shared learning spaces, needs updates or renovations to function well.									
4	Satisfactory - Good size, multiple areas for different teaching methods, good flexibility, good transparency and connection to other studios and shared learning spaces									
5	Very Satisfactory - Generous size, multiple areas for different teaching methods, excellent flexibility, generous display area and visual teaching tools, excellent transparency and connection with other studios and shared learning spaces									
N/A	Does not apply									
8.12	Are Special Education support spaces, such as storage, space for washer/dryer, appropriately configured per the ed spec?				4			Comments	1.00 4.00	
1	Very unsatisfactory - None provided							Recently renovated		
2	Unsatisfactory - Too small, disconnected, poor condition									
3	Neutral - Adequate size, average condition, needs updates or renovations to function well									
4	Satisfactory - Good size, connected, good condition									
5	Very Satisfactory - Generous size, connected, excellent condition									
N/A	Does not apply									

8 - Academics & Learning (cont.)		1	2	3	4	5	N/A				
8.13	Are Accessible restrooms and changing rooms readily available to the Special Education spaces?					5		Comments	1.00	5.00	
	1 No 5 Yes										
STEAM Center											
8.14	Does the campus have space to support a "STEAM" center?	1						Comments	0.00	0.00	
	1 Very unsatisfactory - No available space for STEAM center and inadequate studio / collaborative space 2 Unsatisfactory - Collaborative areas / studios for CTE/CCL are completely separate but adequate size 3 Neutral - Collaborative areas / studios for CTE/CCL are adjacent but function separately 4 Satisfactory - Collaborative areas / studios for CTE/CCL function and have space availability to create STEAM center 5 Very Satisfactory - Functioning STEAM center offers studios, labs, common collaborative areas to support multimedia distance and hands-on project based learning N/A Does not apply							Monitoring answer, but does not count toward overall score			
9 - CTE and Career Connected Learning									5.00	40%	
9.1	How close is your campus to a CTE cluster pathway that is aligned with your CTE programs (Middle School only)?						N/A	Comments	0.00	0.00	
	1 Very unsatisfactory - No correlation to CTE cluster pathway, no CTE programs. 2 Unsatisfactory - School supports less than half of the CTE programs that are listed in the cluster pathway. 3 Average - School support half of CTE programs listed in the cluster pathway, but missing some. 4 Satisfactory - School support a majority of CTE programs listed in the CTE cluster pathway. 5 Very Satisfactory - School is aligned with CTE cluster pathway. N/A Does not apply										
9.2	Do campus facilities align with the CTE Ed Spec Requirements for the current pathways offered?: Architecture and Construction						N/A		0.00	0.00	
	1 No 5 Yes N/A Does not apply										
9.3	Arts, Audio and Video Technology and Communications	1							0.25	0.25	
9.4	Business, Management and Administration					5			0.25	1.25	
9.5	Education and Training						N/A		0.00	0.00	
9.6	Health Science						N/A		0.00	0.00	

9 - CTE and Career Connected Learning (cont.)		1	2	3	4	5	N/A		
9.7	Hospitality and Tourism						N/A		0.00 0.00
9.8	Human Services (high school only)						N/A		0.00 0.00
9.9	Information Technology						N/A		0.00 0.00
9.10	Agriculture, Food and Natural Resources						N/A		0.00 0.00
9.11	Science, Technology, Engineering, and Mathematics	1							0.25 0.25
9.12	Transportation, Distribution and Logistics						N/A		0.00 0.00
9.13	Finance (high school only)	1							0.25 0.25
9.14	Government and Public Administration / JROTC Military programs (high school only)						N/A		0.00 0.00
9.15	Law, Public Safety, Corrections and Security (high school only)						N/A		0.00 0.00
9.16	Manufacturing (high school only)						N/A		0.00 0.00
9.17	Marketing, Sales and Services (high school only)						N/A		0.00 0.00
10 - Visual and Performing Arts									35.00 63%
10.1	Is there flexibility of space to also be used by CTE and Athletics?					5		Comments	0.00 0.00
1 No 5 Yes		Monitoring answer, but doesn't affect overall score.							
10.2	Are band and support spaces (rehearsal and storage) appropriately configured per the ed spec?			3				Comments	1.00 3.00
1 Very unsatisfactory - Too small, missing program spaces 2 Unsatisfactory - Too small, poor condition 3 Neutral - Adequate size, adequate condition, needs updates or renovations to function well. 4 Satisfactory - Good size, good condition 5 Very Satisfactory - Generous size, excellent condition N/A Does not apply									
10.3	Are orchestra and support spaces appropriately configured per the ed spec?	1						Comments	1.00 1.00
1 Very unsatisfactory - Too small, missing program spaces 2 Unsatisfactory - Too small, poor condition 3 Neutral - Adequate size, adequate condition, needs updates or renovations to function well. 4 Satisfactory - Good size, good condition 5 Very Satisfactory - Generous size, excellent condition N/A Does not apply		Space is much too small							

10 - Visual and Performing Arts (cont.)		1	2	3	4	5	N/A			
10.4	Are choir and support spaces appropriately configured per the ed spec?				4			Comments	1.00 4.00	
1	Very unsatisfactory - Too small, missing program spaces							30x40		
2	Unsatisfactory - Too small, poor condition									
3	Neutral - Adequate size, adequate condition, needs updates or renovations to function well.									
4	Satisfactory - Good size, good condition									
5	Very Satisfactory - Generous size, excellent condition									
N/A	Does not apply									
10.5	Are dance and support spaces appropriately configured per the ed spec?			3				Comments	1.00 3.00	
1	Very unsatisfactory - Too small, missing program spaces							Slated for new dance studio as part of the 2017 bond program. New design needs to be evaluated.		
2	Unsatisfactory - Too small, poor condition									
3	Neutral - Adequate size, adequate condition, needs updates or renovations to function well.									
4	Satisfactory - Good size, good condition									
5	Very Satisfactory - Generous size, excellent condition									
N/A	Does not apply									
10.6	Are theater and support spaces appropriately configured per the ed spec?					5		Comments	1.00 5.00	
1	Very unsatisfactory - Too small, missing program spaces							Older theater seats 200. Recently redid rigging. Sound system functional, may need updating. Newer theater seats 500. Built 10 years ago. Can do school side meetings. Large theater has flooding issues in orchestra pit. Recent replacement of curtains.		
2	Unsatisfactory - Too small, poor condition									
3	Neutral - Adequate size, adequate condition, needs updates or renovations to function well.									
4	Satisfactory - Good size, good condition									
5	Very Satisfactory - Generous size, excellent condition									
N/A	Does not apply									
10.7	Are visual arts and support spaces appropriately configured per the ed spec?					5		Comments	1.00 5.00	
1	Very unsatisfactory - Too small, missing program spaces									
2	Unsatisfactory - Too small, poor condition									
3	Neutral - Adequate size, adequate condition, needs updates or renovations to function well.									
4	Satisfactory - Good size, good condition									
5	Very Satisfactory - Generous size, excellent condition									
N/A	Does not apply									
10.8	Does the campus have adequate space for the specialty arts programs (Ensemble, Guitar, Music studies, Music theory and Piano)?	1						Comments	1.00 1.00	
1	No							In a portable		
5	Yes									

11 - Athletics and Wellness						26.25	58%
11.1	Does the campus meet ed spec standard for physical education program spaces?		2			Comments	1.00 2.00
1	Very unsatisfactory - Too small, missing program spaces	Competition gym is very small (10,000 SF) compared to Ed Spec requirements, has too small audience space and no audience space in practice gym. No exterior/public gym entry.					
2	Unsatisfactory - Too small, poor condition						
3	Average - Adequate size, adequate condition, needs some renovations or updates to function well						
4	Satisfactory - Good size, good condition						
5	Very Satisfactory - Generous size, excellent condition						
N/A	Does not apply						
11.2	Does the campus have a dedicated wellness center?	1				Comments	0.50 0.50
1	No						
5	Yes						
11.3	Does the community have access to exterior playfields/courts?			5		Comments	0.50 2.50
1	No						
5	Yes						
11.4	Are facilities available to facilitate eSports (High School only)?	1				Comments	0.00 0.00
1	No	Monitoring answer, but doesn't affect overall score.					
5	Yes						
11.5	Are facilities set up to support UIL sanctioned athletics for basketball?			5		Comments	0.25 1.25
1	No	Would like to reconfigure small gym to accommodate spectators and allow better scheduling of games					
5	Yes						
11.6	Are facilities set up to support UIL sanctioned athletics for track?	1				Comments	0.25 0.25
1	No	Facility supports practice, but does not support spectator events.					
5	Yes						
11.7	Are facilities set up to support UIL sanctioned athletics for football?	1				Comments	0.25 0.25
1	No	Facility supports practice, but does not support spectator events. Field is natural turf.					
5	Yes						
11.8	Are facilities set up to support UIL sanctioned athletics for volleyball?			5		Comments	0.25 1.25
1	No						
5	Yes						
11.9	Are facilities set up to support UIL sanctioned athletics for tennis?	1				Comments	0.25 0.25
1	No	Facility supports practice, but does not support spectator events.					
5	Yes						
11.10	Are facilities set up to support UIL sanctioned athletics for soccer?	1				Comments	0.25 0.25
1	No	Facility supports practice, but does not support spectator events.					
5	Yes						

11 - Athletics and Wellness (cont.)		1	2	3	4	5	N/A		
11.11	Are facilities (dedicated storage) set up to support UIL sanctioned athletics for cross-country (high school only)?					5		Comments	0.25 1.25
	1 No 5 Yes								
11.12	Are facilities (dedicated storage) set up to support UIL sanctioned athletics for golf (high school only)?					5		Comments	0.25 1.25
	1 No 5 Yes								
11.13	Are facilities (dedicated storage) set up to support UIL sanctioned athletics for swimming (high school only)?	1						Comments	0.25 0.25
	1 No 5 Yes							Share facility at UT	
11.14	Are facilities set up to support UIL sanctioned athletics for wrestling (high school only)?					5		Comments	0.25 1.25
	1 No 5 Yes								
11.15	Are facilities set up to support UIL sanctioned athletics for baseball (high school only)?					5		Comments	0.25 1.25
	1 No 5 Yes							Small spectator seating	
11.16	Are facilities set up to support UIL sanctioned athletics for softball (high school only)?					5		Comments	0.25 1.25
	1 No 5 Yes							Small spectator seating	
11.17	Are facilities (dedicated space outside of the gymnasium) available to support competitive spirit activities for cheerleading and drill team?	1						Comments	0.25 0.25
	1 No 5 Yes								
11 - Athletics and Wellness (cont.)		1	2	3	4	5	N/A		
11.18	How do the athletics fields align with FMP Campus Improvements? Turf Field, Parking lot lighting, ADA accessible amenities (high School only)	1						Comments	0.00 0.00
	1 Very unsatisfactory - No turf, inaccessible, no site lighting 2 Unsatisfactory - No turf/field in poor condition, some accessibility concerns, poor site lighting 3 Average - Field in adequate condition, needs some updates or renovations to function well 4 Satisfactory - Turf field in good condition, good ADA access and site lighting 5 Very Satisfactory - Turf field with excellent maintenance, excellent ADA access for spectators and athletes, excellent site lighting N/A Does not apply.							Monitoring answer, but doesn't affect overall score.	

12 - Food Services										10.00	50%	
12.1	Is the Dining Commons appropriately configured per the ed spec?			3						Comments	1.00	3.00
1	Very unsatisfactory - Too small, missing program spaces											
2	Unsatisfactory - Too small, poor condition, only one option for eating space provided, inadequate circulation											
3	Average - Adequate size and condition, needs updates or renovations to function well											
4	Satisfactory - Good size and condition, good circulation, multiple options for eating space (ex: connection to outdoor eating space)											
5	Very Satisfactory - Generous size, excellent condition and circulation, multiple options for eating space (ex: connection to outdoor eating space)											
N/A	Does not apply											
12.2	Are the Food Services support spaces appropriately configured per the ed spec?		2							Comments	1.00	2.00
1	Very unsatisfactory - None provided	Serving line too tight; manager desk located within kitchen space.										
2	Unsatisfactory - Too small, disconnected, poor condition											
3	Neutral - Adequate size, average condition, needs updates or renovations to function well											
4	Satisfactory - Good size, connected, good condition											
5	Very Satisfactory - Generous size, connected, excellent condition											
N/A	Does not apply											
13 - Media Resources										30.00	37%	
13.1	Is the Library/Media Center easily accessible for the occupants and visitors to the school?		2							Comments	1.00	2.00
1	Very unsatisfactory - Not accessible											
2	Unsatisfactory - Limited access, difficult to find, no transparency											
3	Average - Adequate accessibility, needs updates or renovations to function well											
4	Satisfactory - Accessible, easy to find, good transparency, good condition											
5	Very Satisfactory - Accessible, easy to find, excellent transparency, excellent condition											
N/A	Does not apply											

13 - Media Resources - Continued		1	2	3	4	5	N/A				
13.2	How well does the Library/Media Center support quiet study?	1						Comments	1.00	1.00	
1	Very unsatisfactory - No quiet study spaces										
2	Unsatisfactory - One area in poor condition, poor acoustic privacy										
3	Average - One or more areas provided, needing updates or renovations to function well										
4	Satisfactory - Clusters or small rooms adjacent to media center, good condition, good acoustic privacy										
5	Very Satisfactory - Multiple clusters or small rooms adjacent to media center, excellent condition, excellent acoustic privacy										
N/A	Does not apply										
13.3	How well does the Library/Media Center support social interaction?		2					Comments	1.00	2.00	
1	Very unsatisfactory - No space										
2	Unsatisfactory - Too small, poor condition, layout and furnishings do not support informal interaction well										
3	Average - Adequate size and condition, needs updates or renovations to function well.										
4	Satisfactory - Good size, good condition, layout and furnishings support informal interactions										
5	Very Satisfactory - Generous size, excellent condition, layout and furnishings support informal interactions										
N/A	Does not apply										
13.4	How well does the Library/Media Center support collaborative work in small groups (4-8 students)?	1						Comments	1.00	1.00	
1	Very unsatisfactory - No breakout rooms, no flexible furniture, no support										
2	Unsatisfactory - Too small, one area, poor condition										
3	Average - Adequate size, multiple areas provided, needing updates or renovations to function well										
4	Satisfactory - Clusters or small rooms adjacent to media center, flexible furniture, good condition										
5	Very Satisfactory - Multiple clusters or small rooms adjacent to media center, flexible furniture, excellent condition										
N/A	Does not apply										
13.5	How well does the Library/Media Center support collaborative work in larger groups (10-25)?			3				Comments	1.00	3.00	
1	Very unsatisfactory - No gathering areas										
2	Unsatisfactory - Too small, one common space, limited seating, poor condition										
3	Average - Adequate size, one common space, needs updates or renovations to function well										
4	Satisfactory - Good size, multiple common spaces with seating, good condition										
5	Very Satisfactory - Generous size, multiple commons spaces with seating, excellent condition										
N/A	Does not apply										

13 - Media Resources - Continued		1	2	3	4	5	N/A			
13.6	How well does the Library/Media Center support technology?		2					Comments	1.00 2.00	
1	Very unsatisfactory - No vis comm tools									
2	Unsatisfactory - Outdated, poorly functioning, or insufficient									
3	Average - Mix of old and new whiteboards/projectors/etc.									
4	Satisfactory - projectors, marker boards, smart boards in most spaces - good condition									
5	Very Satisfactory - projectors, marker boards, smart boards in most spaces - new condition									
N/A	Does not apply									
14 - Technology		1	2	3	4	5	N/A		20.00 45%	
14.1	How well equipped are the facilities with instructional technology?		2					Comments	1.00 2.00	
1	Very unsatisfactory - Limited to no technology present in instructional spaces									
2	Unsatisfactory - One type of technology present									
3	Average - Multiple types of technology, smart boards. Poor condition. Limited to only certain areas of school.									
4	Satisfactory - Multiple types of technology, smart boards. Good condition.									
5	Very Satisfactory - Multiple types of technology, smart boards. Excellent condition									
N/A	Does not apply									
14.2	Is there an adequate number of power and data outlets in learning spaces?			3				Comments	1.00 3.00	
1	Very unsatisfactory - Outlet configuration does not support digital devices throughout school (1 per wall)								Original building lacking outlets; newer renovated spaces are well covered.	
2	Unsatisfactory - Outlet configuration support digital devices only in certain areas of school (2 per wall)									
3	Average - Outlet configuration support digital devices but limited capacity throughout school (3 per wall)									
4	Satisfactory - Outlet configuration support digital devices with adequate coverage and capacity in limited locations (>3 per wall)									
5	Very Satisfactory - Excellent outlet configuration to support digital devices throughout school (>3 per wall)									
N/A	Does not apply									

14 - Technology (cont.)		1	2	3	4	5	N/A			
14.3	Are there adequate charging locations for devices?	1						Comments	1.00	1.00
1	Very unsatisfactory - Not enough charging locations throughout school for 1:1							None observed		
2	Unsatisfactory - Charging locations, haphazard locations, and inadequate in size for number of devices									
3	Average - Charging locations well organized but not enough capacity for 1:1									
4	Satisfactory - Charging locations, haphazard locations, but supports 1:1.									
5	Very Satisfactory - Charging locations throughout school to support 1:1.									
N/A	Does not apply									
14.4	Is there adequate AV for presentations spaces – cafeteria, gym, aux gym?			3				Comments	1.00	3.00
1	Very unsatisfactory - AV not present in one or more space									
2	Unsatisfactory - AV undersized for room. Poor condition									
3	Average - AV adequately sized / poor condition OR AV undersized / average condition									
4	Satisfactory - AV adequately sized for room. Average Condition.									
5	Very Satisfactory - AV adequately sized for room. Excellent condition.									
N/A	Does not apply									
14.5	Is there digital media signage at the reception area?	1						Comments	0.00	0.00
1	Very unsatisfactory - No digital media present in reception area									
2	Unsatisfactory - Undersized, poor condition									
3	Average - Adequately sized / poor condition OR undersized / adequate condition									
4	Satisfactory - Media signage present, good sized, good condition									
5	Very Satisfactory - Generously sized, excellent condition									
N/A	Does not apply									

