

## Educational Suitability Summary Report

Govalle Elementary School

Date: 01/05/2021

**Score 94% Very Satisfactory**

Govalle Elementary School, serving an enrollment of approximately 370 students, is in east Austin. It was one of the first projects completed as part of the 2017 bond program and fully replaced the old Govalle Elementary School originally built in 1931. The school opened in mid-February 2020 and has 81,000 square feet on 9 acres. The school offers a wide range of programs, including pre-K, dual language and STEM education.

The building has two stories at the studio wing, and there is ample access to daylight throughout. The school has a generous collection of learning spaces, from appropriately sized studios to small group rooms and flexible learning spaces, all meeting the district's Educational Specifications. The outdoor spaces are nicely designed to accommodate both outdoor studios and a generous garden. Existing old growth trees on the site are focal points and provide shade within the courtyards.

### Interview Overview

The attendees for the interview included Principal Paula Reyes, Assistant Principal Natasha Canlas, librarian Stacey Smith, special education team leader Candace Fox, special education teacher Henry Jaeger, reading assistant team leader Diana Clemens and head custodian Jose Cazares. When designing the new campus, the community wanted to preserve as many trees on site as possible, and that is a feature that they would like to preserve into the future as well. The interviewees also mentioned their new apiary and artwork they have inherited as important features that should be kept at the school. The playground is important to remain, as it offers a sense of place and connection to the Govalle community.

The staff indicated that it was difficult to predict what programs would need the most space in the school as programs can change over the years. They felt that they did not plan for enough space for support staff in addition to the professional learning center spaces that are present. They lack additional spaces for programs, such as material storage for instructional specialists, or their new SCORES unit. They would like to be able to add programs such as preK-3, but do not have the space for it. Teachers have struggled with material storage and the flexibility of shared spaces but think that better mobile storage solutions could solve these issues. Requests for more adult restrooms were unanimous, as teachers typically wait to use one restroom on the second floor, and it does not lock.

Regarding outdoor learning and the future of teaching environments, they would like better outdoor classroom settings with proper shading and furniture. There is an outdoor garden space, but it is isolated next to the parking lot and outdoor basketball courts. They have learned that when the community uses the courts, they trample through the gardens to retrieve balls, so a fence to protect these areas is needed. Additional seating in the gardens would support teaching opportunities in those spaces. They would like to utilize outdoor spaces to be a more integral part of the teaching

experience.

The staff would like educational resources on how their building works, including informational signage about its green features. These would help teachers, students and visitors better understand the building. Post-occupancy support for teachers and staff was a point of focus, as most teachers and students have never used these newer types of furniture and teaching spaces. Having time for students to test out their new space would help, since students require more supervision with the space and autonomy to do things on their own.



**Assessment Findings**

The Educational Suitability Assessment of Govalle Elementary School earned a 94% overall score and places the campus in a category of Very Satisfactory. The assessment consists of seven General Building categories and seven Academic categories. All categories scored within the Very Satisfactory score range.

**Very Satisfactory Categories (81-100%):**

**Exterior**

Score is very satisfactory.

There is excellent separation of bus and vehicle pickup and drop-off and adequate stack space. The signage is very clear for the school and circulation, and all three dumpsters adjacent to cafeteria are present.

**Outdoor Learning and Activity**

Score is very satisfactory.

There is an outdoor studio with some shade and a whiteboard available. There are excellent gardens and a large cistern in the courtyard. One of the two playgrounds has shade.

**General Building**

Score is very satisfactory.

The corridors are wide and daylit. There is a community room with a stove and small kitchenette available. The gym and cafeteria can be used after-hours with a separate entrance from the parking lot.

**Security**

Score is very satisfactory.



**Environmental Quality**

Score is very satisfactory.

All studios have ample daylight and views to the exterior. The acoustics in the studios are average as it appears from construction drawings that the walls do not extend all the way to structure above. Sound transmission was mentioned in the interview, with staff stating that noise levels could get high and cause them to raise their voices.

**Controllability of Systems**

Score is very satisfactory.

Each studio has a thermostat, and there are blinds in all studios and room darkening shades in some spaces, such as the art room. Per lighting drawings, all lighting is dimmable.

**Furniture, Fixtures, Equipment**

Score is very satisfactory.

There is new furniture throughout the school that is flexible and reconfigurable in most spaces. Dining commons has regular table seating and booth seating.

**Academics & Learning**

Score is very satisfactory.

Studios are appropriately sized and have excellent access to common collaboration spaces and small group rooms. Many studios have foldable partitions that open to the hallway. There are two maker spaces, one on each level, and there are excellent display opportunities throughout the school.

**Visual and Performing Arts**

Score is very satisfactory.

Music room and art room are adequately sized and meet Ed Spec requirements. The stage is appropriately sized and was set up with choir risers during the assessment.

**PE and Wellness**

Score is very satisfactory.

Gym is appropriately sized per Ed Spec. The gym office does not have its own locker and restroom per Ed Spec.

**Food Services**

Score is very satisfactory.

Cafeteria is appropriately sized per Ed Spec. There is chair storage but no dedicated stage storage.

**Media Resources**

Score is very satisfactory.

The media center is a light-filled space that can accommodate larger groups as well as space for individual reading. There are nooks at the windows for kids to sit, and there is a connection to the adjacent maker space and outdoor learning area.

**Technology**

Score is very satisfactory.

Instructional technology is new, and there are charging towers in certain locations. There is a large

**Educational Suitability Summary Report**  
Govalle Elementary School

**Perkins&Will**

digital display at the school entrance for announcements.

**Administration Spaces**

Score is very satisfactory.

The admin area feels welcoming. The seating at the entry is not large, but the space is light-filled and has adequate seating. There are two conference rooms available within the admin space, but talking could be heard between the room and the corridor, which indicates that acoustic privacy between rooms may be an issue.

### Supporting Photographs

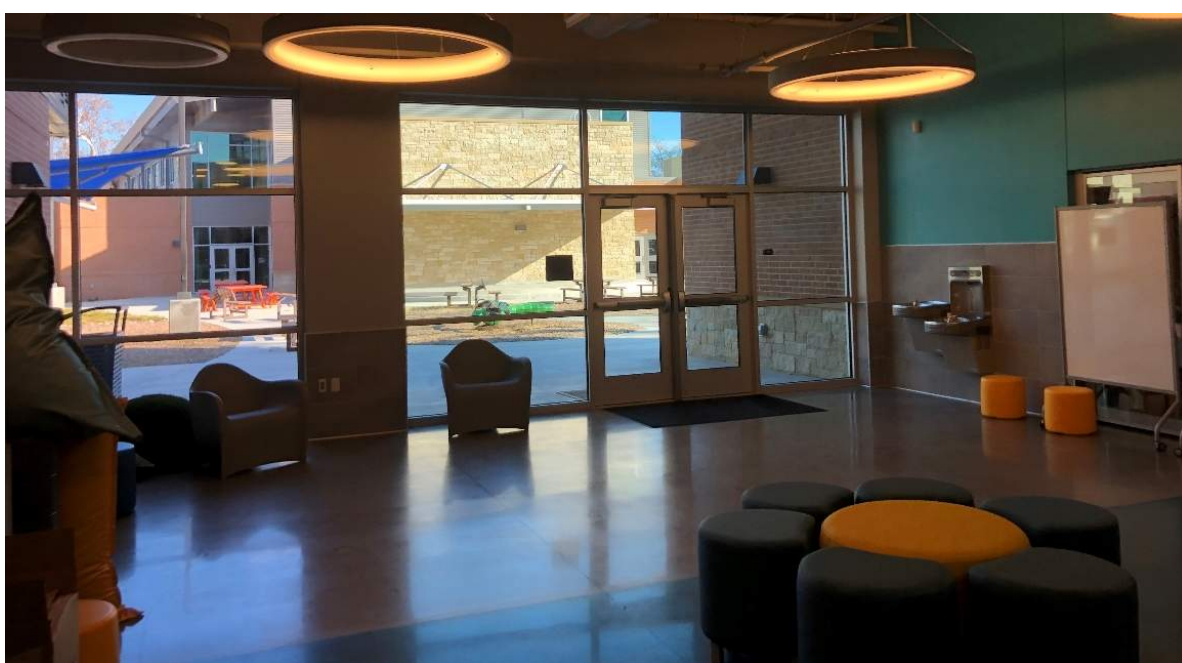


*Library is located off main corridor near entry. A moveable glass partition can open the Library up to the corridor where additional informal seating is located. The main corridor is daylit and has a generous amount of space for informal interaction.*



*Media center has different types of flexible seating and small nooks for individual reading. Doors (shown beyond) open to a secured courtyard with shade and seating.*

**Supporting Photographs**



*Learning neighborhood collaboration space has excellent daylight and flexible furniture.*



*Typical studio has flexible furniture, casework storage and excellent daylight/views.*

**Supporting Photographs**



*Outdoor teaching space adjacent to collaboration space has some shade and a whiteboard.*



*Cafetorium has movable partition between gym and cafeteria. All program elements are appropriately sized per Ed Spec. Stage A/V is new and satisfactory.*

**Supporting Photographs**



*Hallway in learning neighborhoods is wide enough with flexible furniture to allow small groups to meet. Glass in the studios to the hallway allows for passive supervision of students.*



*Maker space on second floor provides power for a variety of activities. Large sliding doors open the room to a large commons area.*



**Supporting Photographs**



*Outdoor gardens with an additional outdoor classroom space adjacent. This space is far removed from studios.*



*Entry has generous overhang and lower canopy for weather protection at pickup and drop-off.*



**Austin ISD Educational Suitability Assessment Criteria**

**General Building**

**School Name**

**Govalle Elementary School**

**Walk Attendees:**

Carlos Cruz / Lynn Petermann

**Date:**

01.05.2021

1 - Exterior		1	2	3	4	5	N/A	8.75	100%	
1.1	Does the site permit desirable separation of vehicular, bus and pedestrian traffic?					5		Comments	1.00	5.00
	1 Very unsatisfactory - Bus, car and pedestrian all happen at the same location							Excellent site circulation and adequate queueing space.		
	2 Unsatisfactory - Cars and buses mix, pedestrians are separated									
	3 Average - Buses, cars, and pedestrians are separate but stack space is small									
	4 Satisfactory - Buses, cars, and pedestrians are separate but drop off does not have a canopy or a holding place like a commons or cafeteria									
	5 Very satisfactory - Buses, cars, and pedestrians are separate and drop off area has a canopy and destination									
	N/A Does not apply									
1.2	Is the building easily identified with appropriate signage and community wayfinding?					5		Comments	0.25	1.25
	1 Very unsatisfactory - Campus has no signage / wayfinding							Signage is clear and easy to use. Nice digital marquee at front of school.		
	2 Unsatisfactory - Signage/wayfinding is faded/hidden									
	3 Average - Signage / wayfinding visible but not apparent									
	4 Satisfactory - Signage / wayfinding is visible but not good condition									
	5 Very satisfactory - Signage and wayfinding is visible and easy to use									
	N/A Does not apply									

1 - Exterior (cont.)		1	2	3	4	5	N/A			
1.3	Is the dumpster accessible for trash / compost disposal?					5		Comments	0.50 <b>2.50</b>	
1	Very unsatisfactory - No compost present, route has obstacles (stairs, curbs, barriers) to dumpster							3 dumpsters for recycling/trash/compost near kitchen/cafeteria.		
2	Unsatisfactory - Compost is present. Route has obstacles to dumpster									
3	Average - Compost is present (<100' to cafeteria), Route to dumpster is free and clear but the two are not directly adjacent.									
4	Satisfactory - Compost and dumpster are directly adjacent and route is barrier free									
5	Very Satisfactory - Compost and dumpster are directly adjacent and route is barrier free. Dumpster are shaped / positioned so people of all heights can access it.									
N/A	Does not apply									
2 - Outdoor Learning and Activities		1	2	3	4	5	N/A	15.00 <b>93%</b>		
2.1	Are outdoor studios and support spaces appropriately configured per the ed spec?					5		Comments	1.00 <b>5.00</b>	
1	Very unsatisfactory - No dedicated outdoor studios							Nice studio outdoor with white board. Shade provided at outdoor learning area in courtyard. Shade is not provided at additional outdoor studio by the garden.		
2	Unsatisfactory - Too small, poor condition, disconnected from learning spaces, no flexibility, no shade provided									
3	Average - Adequate size, adequate condition, needs some renovations or updates to function well, 50% or less shade coverage over studio area									
4	Satisfactory - Good size, good condition, connected to learning spaces, good flexibility, more than 50% shade coverage over studio area									
5	Very satisfactory - Generous size, excellent condition, connected to learning spaces, excellent flexibility, full shade coverage over studio area									
N/A	Does not apply									
2.2	Are active playgrounds (elementary only) and support spaces configured per the ed spec?				4			Comments	1.00 <b>4.00</b>	
1	Very unsatisfactory - No dedicated active playground							No shade over playground big kid playground. Shade over 2 -5 playground		
2	Unsatisfactory - Too small, poor condition, no shade provided									
3	Average - Adequate size, adequate condition, needs some renovations or updates to function well, 50% or less shade coverage over play structure									
4	Satisfactory - Good size, good condition, more than 50% shade coverage over play structure									
5	Very satisfactory - Generous size, excellent condition, full shade coverage over play structure									
N/A	Does not apply									

2 - Outdoor Learning and Activities (cont)		1	2	3	4	5	N/A		
2.3	Are gardens and support spaces appropriately configured per the ed spec? (evaluation on infrastructure not condition of plants)				4			Comments	0.00 <b>0.00</b>
1	Very unsatisfactory - No dedicated gardens							Monitoring answer, but does not affect overall score for Outdoor Learning & Activity.  Excellent gardens with irrigation. Somewhat removed from school and studios.	
2	Unsatisfactory - Too small, poor condition, disconnected from learning spaces, no flexibility, no accessible water source								
3	Average - Adequate size, adequate condition, needs some renovations or updates to function well, water source is difficult to access								
4	Satisfactory - Good size, good condition, connected to learning spaces, good flexibility, water source is accessible with 100 ft hose								
5	Very Satisfactory - Generous size, excellent condition, connected to learning spaces, excellent flexibility, water source is less than 50ft from the garden or has irrigation								
N/A	Does not apply								
2.4	Are the rain gardens and/or cisterns appropriately configured per the ed spec?					5		Comments	0.00 <b>0.00</b>
1	Very unsatisfactory - No rain gardens or cisterns							Monitoring answer, but does not affect overall score for Outdoor Learning & Activity ,  Large cistern in courtyard	
2	Unsatisfactory - Too small, poor condition, not functioning, disconnected								
3	Average - Adequate size, adequate condition, is connected, needs some renovations or updates to function well								
4	Satisfactory - Good size, good condition, functions properly								
5	Very Satisfactory - Generous size, excellent condition, exceptional functionality, connected to learning spaces, educational signage provided								
N/A	Does not apply								
2.5	Does the school have animal husbandry? (optional)	1						Comments	0.00 <b>0.00</b>
1	No								
5	Yes								
2.6	Does the school have nature loop trails? (optional)					5		Comments	0.00 <b>0.00</b>
1	No								
5	Yes								
2.7	Does the school have a learning pond? (optional)					5		Comments	0.00 <b>0.00</b>
1	No								
5	Yes								
2.8	Does the school have a grass play field and walking trail?					5		Comments	1.00 <b>5.00</b>
1	No								
5	Yes								

3 - General Building		1	2	3	4	5	N/A	11.25	93%	
3.1	Are interior circulation routes wide enough to safely and effectively accommodate student movement?					5		Comments	0.50	2.50
	1 Very unsatisfactory - Primary circulation is 5'-0" to 6'-0" wide 2 Unsatisfactory - Primary circulation is 6'-0" to 7'-0" wide 3 Average - Primary circulation is 7'-0" to 8'-0" wide 4 Satisfactory - Primary circulation is 8'-0"-10'-0" wide 5 Very satisfactory - Primary circulation is 10'-0"+ wide N/A Does not apply							Review per construction documents from 2017 Bond. Primary circulation 10' 0" and over in some locations.		
3.2	Are community use areas arranged so that the school can allow night functions without full school access?				4			Comments	0.75	3.00
	1 Very unsatisfactory - Cafeteria, gym, and library cannot be accessed after hours 2 Unsatisfactory - Only one of the public spaces (Cafeteria, Gym and Library) can be accessed from parking and secured after hours 3 Average - Only two of the public spaces can be accessed from parking and secured after hours 4 Satisfactory - All of the public spaces can be accessed from parking and secured from the rest of the building but not individually 5 Very satisfactory - Cafeteria, gym, and library can be accessed from parking and locked off from rest of campus for night/evening use with their own entrance N/A Does not apply							Gym and cafeteria (not library) can be accessed from separate door at parking lot.		
3.3	Is there a community room that is a dedicated meeting space outside of school function?					5		Comments	0.75	3.75
	1 Very unsatisfactory - No dedicated community room 2 Unsatisfactory - Community room but within school function, no access after school hours 3 Average - Community room, moderate size, but need some renovations or updates to function well 4 Satisfactory - Community room, good size /layout, meets needs /functions well 5 Very Satisfactory - Community room, generous size, nice condition, functions appropriately outside of school function N/A Does not apply							Community Room B108 is directly accessible from entry vestibule with all amenities of a full kitchen, restroom and an office.		
3.4	Does the general appearance of the school convey pride for the students and community?					5		Comments	0.25	1.25
	1 Very unsatisfactory - General appearance is poor 2 Unsatisfactory - General appearance is aged but ok 3 Average - General appearance is good 4 Satisfactory - General appearance shows pride in campus and student works 5 Very satisfactory - General appearance shows pride in campus and student works and is welcoming to the community N/A Does not apply									



5 - Environmental Quality		1	2	3	4	5	N/A	25.00	92%	
5.1	How are acoustics in studios in general?			3				1.00	3.00	
1	Very unsatisfactory - Recognized word/sound from adjacent studio/corridor	<p>Review per construction documents from 2017 Bond. Review of typical studios, wall tagged as F3 (detailed on sheet A7.00A) between classrooms does not show any insulation and only goes to 6" above finished ceiling. Possible sound transmission at this wall location. Other walls tagged S3A are detailed going to structure above with insulation.</p>								
2	Unsatisfactory - Audible sound from adjacent studio/corridor									
3	Average - Slight sound from outside room									
4	Satisfactory - Walls to deck insulated only white noise from mechanical system									
5	Very satisfactory - Able to hear quiet speaking from across the room									
N/A	Does not apply									
5.2	Is the studio artificial lighting adequate quality?					5		1.00	5.00	
1	Very unsatisfactory - Sporadic lights work, glare, less than 20 FC									
2	Unsatisfactory - 10-19 FC or serious glare									
3	Average- 20-29 FC minor glare									
4	Satisfactory - 30-39 FC and no glare									
5	Very satisfactory - 40+ FC and no glare									
N/A	Does not apply									
5.3	Is there access to natural light in studios?					5		1.00	5.00	
1	Very unsatisfactory - No learning spaces have natural light	<p>Typical studio has two large windows.</p>								
2	Unsatisfactory - 1-25% of learning spaces have natural light or windows are too small to let in light									
3	Average - 26-50% of learning spaces have natural light									
4	Satisfactory - 51-75% of learning spaces have natural light									
5	Very satisfactory - 76-100% of learning spaces have natural light									
N/A	Does not apply									
5.4	Is there access to outside views from learning spaces?					5		1.00	5.00	
1	Very unsatisfactory - No learning spaces have views	<p>Each studio has two large windows as well as collaboration spaces have large windows.</p>								
2	Unsatisfactory - 1-25% of learning spaces have views or windows are too small to see out									
3	Average - 26-50% of learning spaces have views									
4	Satisfactory - 51-75% of learning spaces have views									
5	Very satisfactory - 76-100% of learning spaces have views									
N/A	Does not apply									

<b>5 - Environmental Quality (cont.)</b>		1	2	3	4	5	N/A			
5.5	Does the building have odor or pest problems?					5		Comments	1.00	<b>5.00</b>
1	Very unsatisfactory - Evidence of both pests and odors									
2	Unsatisfactory - Evidence of pests or odors									
3	Average - Limited evidence of pests, no odors									
4	Satisfactory - No evidence of pests / odors, school cleanliness in good condition									
5	Very Satisfactory - No evidence, school cleanliness in excellent condition									
N/A	Does not apply									
<b>6 - Controllability of Systems</b>		1	2	3	4	5	N/A		12.50	<b>100%</b>
6.1	Does the studio thermostat allow for individual control?					5		Comments	0.50	<b>2.50</b>
1	No									
5	Yes									
6.2	Are shades provided to control natural light in learning spaces?					5		Comments	1.00	<b>5.00</b>
1	Very unsatisfactory - No, windows are covered with boards/paper	Horizontal blinds scheduled for most rooms. Room darkening shades scheduled at some other special rooms, such as Art Room B114. Some areas with electrical window shades.								
2	Unsatisfactory - No, windows have no light control									
3	Average - Yes, but poor condition blinds									
4	Satisfactory - Yes, blinds									
5	Very satisfactory - Blackout shades									
N/A	Does not apply									
6.3	What is the quality of lighting controls in the studios?					5		Comments	1.00	<b>5.00</b>
1	Very unsatisfactory - Single switch only per room	Per lighting drawings all lighting dimmable.								
2	Unsatisfactory - Alternating rows switch off									
3	Average - Alternating lamps in single fixtures switch off									
4	Satisfactory - Tri level switching									
5	Very satisfactory - Dimmable									
N/A	Does not apply									



7 - Furniture, Fixtures & Equipment		1	2	3	4	5	N/A	18.75	95%	
7.1	What is the current condition of the furniture?					5		Comments	0.75 <b>3.75</b>	
1	Very unsatisfactory - Damaged or broken, non-functioning									
2	Unsatisfactory - Torn/ bent/ wrong size									
3	Average - Scratched/dented/marked									
4	Satisfactory - Not new, but sturdy and clean									
5	Very satisfactory - New									
N/A	Does not apply									
7.2	Are a variety of furniture types being accommodated throughout the school - learning commons, dining commons, other multi-use spaces?					5		Comments	1.00 <b>5.00</b>	
1	Very Unsatisfactory - Same furniture used in all spaces								All collaboration spaces have flexible moveable furniture. Dining commons has booths and regular table seating.	
2	Unsatisfactory - Furniture variety in one multi-use space									
3	Average - Furniture variety in more than one multi-use space									
4	Satisfactory - All multi-use spaces have greater than one type of furniture									
5	Very satisfactory - All multi-use spaces have greater than two types of furniture									
N/A	Does not apply									
7.3	How well does furniture accommodate rapid reconfiguration of a space?				4			Comments	1.00 <b>4.00</b>	
1	Very Unsatisfactory - Furniture is fixed or very heavy								Multiple configurations are possible, but some of it is not easy to move.	
2	Unsatisfactory - Furniture does not allow desks to be configured as individuals, small groups, or large groups									
3	Average - Mix of furniture that can reconfigure but is cumbersome to move									
4	Satisfactory - Furniture is flexible for multiple configurations of space									
5	Very satisfactory - Furniture is flexible for multiple configurations of space, easy to move and stack									
N/A	Does not apply									
7.4	Is the furniture ergonomic and size appropriate for grade level?					5		Comments	1.00 <b>5.00</b>	
1	Very unsatisfactory - Desk with attached chair combinations too small for grade level									
2	Unsatisfactory - Desk with attached chair combinations									
3	Average - Mix of studios with tables/loose chairs and desks with fixed seats									
4	Very satisfactory - Tables with loose chairs									
5	Very satisfactory - Tables with loose chairs that allow students to be active									
N/A	Does not apply									

Zero Waste		1	2	3	4	5	N/A	5.00	80%	
Do studios and corridors have blue recycle bins with bilingual instructions and/or image sorting instructions?					4			Comments	0.50 <b>2.00</b>	
1	Very unsatisfactory - There are no recycling and landfill bins and signage are sparse or infrequent, OR there are only landfill bins with no recycling bins.							A score for this category is being recorded, but this category is not calculated in the overall ESA average.  Difficult to tell during Covid protocols.		
2	Unsatisfactory - Bins and signage are sparse or infrequent and/or lack clear signage.									
3	Average - 50% of corridors and studios have both a landfill bin and a recycle bin in an accessible location. The containers have clear signage.									
4	Satisfactory - 75% of studios and corridors have a visible landfill and recycle collection containers in an accessible location. The containers have clear signage.									
5	Very satisfactory - All studios / corridors (100%) have visible landfill and recycle collection containers in accessible locations. The containers have clear signage, and the style and format is consistent and uniform across campus.									
N/A	Does not apply									
Does the cafeteria (or wherever meals are served) have at least one of each: green compost bin, blue recycle bin, and landfill bin? Are the bins labelled clearly with bilingual and/or image sorting?					4			Comments	0.50 <b>2.00</b>	
1	Very unsatisfactory- There may be landfill bins, but there are no compost and/or recycle bins. There is not clear sorting signage.							Difficult to tell during Covid protocols.		
2	Unsatisfactory- Recycle, landfill, and compost bins are present, but the bins are scattered and no co-located next to one another. Signage is absent or inconsistent.									
3	Average- There is at least one waste station with all three bins (recycle, compost, landfill) located with close proximity to one another. The signage is visible and consistent.									
4	Satisfactory- There are several waste stations as described above									
5	Very Satisfactory - There are several waste stations as described above, and additional signage in the cafeteria that encourages recycling/composting.									
N/A	Does not apply									



**Austin ISD Educational Suitability Assessment Criteria**

**Academics - Elementary School**

**School Name**

**Govalle Elementary School**

**Walk Attendees:**

Carlos Cruz / Lynn Petermann

**Date:**

01.05.2021

<b>8 - Academics &amp; Learning</b>		1	2	3	4	5	N/A	70.00	93%	
8.1	Are studios appropriately configured per the ed spec?					5		Comments	1.00	5.00
1	Very unsatisfactory - Too small, no flexibility, disconnected							Studios at 855 SF		
2	Unsatisfactory - Too small, only one area for all teaching methods, limited flexibility, disconnected									
3	Neutral - Adequate size, multiple areas for different teaching methods, adequate flexibility, limited transparency and connection to other studios and shared learning spaces, needs updates or renovations to function well.									
4	Satisfactory - Good size, multiple areas for different teaching methods, good flexibility, good transparency and connection to other studios and shared learning spaces									
5	Very Satisfactory - Generous size, multiple areas for different teaching methods, excellent flexibility, generous display area and visual teaching tools, excellent transparency and connection with other studios and shared learning spaces									
N/A	Does not apply									
8.2	Do Pre-K and Kinder have appropriate support spaces such as restrooms and storage per the ed spec?					5		Comments	1.00	5.00
1	Very unsatisfactory - None provided									
2	Unsatisfactory - Too small, disconnected, poor condition									
3	Neutral - Adequate size, average condition, needs updates or renovations to function well									
4	Satisfactory - Good size, connected, good condition									
5	Very Satisfactory - Generous size, connected, excellent condition									
N/A	Does not apply									

8 - Academics & Learning (cont.)		1	2	3	4	5	N/A			
8.3	Do studios have appropriate support spaces such as storage per the ed spec?					5		Comments	1.00	5.00
	1 Very unsatisfactory - None provided							Casework storage		
	2 Unsatisfactory - Too small, disconnected, poor condition									
	3 Neutral - Adequate size, average condition, needs updates or renovations to function well									
	4 Satisfactory - Good size, connected, good condition									
	5 Very Satisfactory - Generous size, connected, excellent condition									
	N/A Does not apply									
8.4	Do typical learning neighborhoods have small group rooms and open collaboration space?					5		Comments	1.00	5.00
	1 Very unsatisfactory - No breakout rooms or open collaboration spaces are provided									
	2 Unsatisfactory - Too small or too few, poor condition, no flexibility, lacks visual connection to learning neighborhood, poor acoustic privacy									
	3 Average - Adequate size, adequate condition, needs some renovations or updates to function well									
	4 Satisfactory - Good size, good condition and flexibility, transparency and connection to learning neighborhood, acoustic privacy									
	5 Very Satisfactory - Generous size, excellent condition and flexibility, transparency and connection to learning neighborhood, acoustic privacy									
	N/A Does not apply									
8.5	Are general studios large enough to support project-based learning and multiple teaching modalities?				4			Comments	1.00	4.00
	1 Very unsatisfactory - Too small, no flexibility, does not support project-based learning							Studios are not overly generous but still have a satisfactory amount of flexibility.		
	2 Unsatisfactory - Undersized, decentralized resources, limited flexibility									
	3 Average - Adequate size, needs some renovations or updates to function well									
	4 Satisfactory - Good size, centralized resources, good flexibility									
	5 Very Satisfactory - Generous size, centralized project resources, excellent flexibility									
	N/A Does not apply									

8 - Academics & Learning (cont.)		1	2	3	4	5	N/A		
8.6	Are Maker Spaces and support spaces appropriately configured per the ed spec?					5		Comments	1.00 <b>5.00</b>
1	Very unsatisfactory - No dedicated maker spaces							Two maker spaces - one on first floor, one on second. Excellent flexibility and infrastructure	
2	Unsatisfactory - Too small, poor condition, disconnected from learning spaces, no flexibility								
3	Average - Adequate size, adequate condition, needs some renovations or updates to function well								
4	Satisfactory - Good size, good condition, connected to learning spaces								
5	Very Satisfactory - Generous size, excellent condition, connected to learning spaces								
N/A	Does not apply								
8.7	Is there a Professional Learning Center in the learning neighborhood?				4			Comments	1.00 <b>4.00</b>
1	Very unsatisfactory - No dedicated space for Professional Learning Center							Only one PLC per level, not per learning neighborhood. PLC on second floor shares with maker space.	
2	Unsatisfactory - Too small, poor condition, disconnected								
3	Average - Adequate size, adequate condition, needs some renovations or updates to function well								
4	Satisfactory - Good size, good condition, connected								
5	Very Satisfactory - Generous size, excellent condition, connected								
N/A	Does not apply								
8.8	Is there a dedicated science room and support space?	1						Comments	0.00 <b>0.00</b>
1	No							Monitoring answer, but doesn't affect overall score.	
5	Yes								
8.9	Are there adequate places to display the evidence and artifacts of learning (both 2D and 3D)?					5		Comments	1.00 <b>5.00</b>
1	Very unsatisfactory - No dedicated space							Nice displays for 3-D artifacts at music and art room.	
2	Unsatisfactory - Too small, non-dedicated, poor condition								
3	Average - Adequate size, adequate condition, needs updates or renovations to function well								
4	Satisfactory - Good size, good condition								
5	Very Satisfactory - Generous size, excellent condition								
N/A	Does not apply								

8 - Academics & Learning (cont.)		1	2	3	4	5	N/A			
8.10	Does the building provide adequate opportunities for students/teachers to collaborate in varying group sizes?					5		Comments	1.00 <b>5.00</b>	
1	Very unsatisfactory - No space to support collaboration in various sizes.									
2	Unsatisfactory - Too small, inflexible, only one option, does not support a variety of group sizes									
3	Average - Adequate space for collaboration, needs updates or renovations to function well.									
4	Satisfactory - Good size, good condition, multiple options to support a variety of group sizes									
5	Very Satisfactory - Generous size, excellent condition, multiple options to support a variety of group sizes									
N/A	Does not apply									
8.11	Does the building provide opportunities for informal interaction?					5		Comments	1.00 <b>5.00</b>	
1	Very unsatisfactory - No space							Multiple lobby spaces to support informal interaction and collaboration spaces / small groups in studio wings.		
2	Unsatisfactory - Too small, poor condition, layout and furnishings do not support informal interaction well									
3	Average - Adequate size and condition, needs updates or renovations to function well.									
4	Satisfactory - Good size, good condition, layout and furnishings support informal interactions									
5	Very Satisfactory - Generous size, excellent condition, layout and furnishings support informal interactions									
N/A	Does not apply									
8.12	Does the learning neighborhood / building provide adequate opportunities for students to work independently?				4			Comments	1.00 <b>4.00</b>	
1	Very unsatisfactory - No breakout rooms/small study spaces							There are small group rooms and breakout space in the corridors, but independent study is dependent upon furniture set-up.		
2	Unsatisfactory - Too small, poor condition, no acoustic privacy, only one space for independent work, disconnected from learning neighborhood									
3	Average - Adequate size and condition, needs updates or renovations to function well.									
4	Satisfactory - Good size and condition, acoustic privacy, variety of independent work space options, connected to learning neighborhood									
5	Very Satisfactory - Generous size, excellent condition, acoustic privacy, variety of independent work space options, connected to learning neighborhood									
N/A	Does not apply									

8 - Academics & Learning (cont.)										
8.13	Are Special Education spaces appropriately configured per the ed spec?				4			Comments	1.00	<b>4.00</b>
1	Very unsatisfactory - Too small, no flexibility, disconnected									
2	Unsatisfactory - Too small, only one area for all teaching methods, limited flexibility, disconnected									
3	Neutral - Adequate size, multiple areas for different teaching methods, adequate flexibility, limited transparency and connection to other studios and shared learning spaces, needs updates or renovations to function well.									
4	Satisfactory - Good size, multiple areas for different teaching methods, good flexibility, good transparency and connection to other studios and shared learning spaces									
5	Very Satisfactory - Generous size, multiple areas for different teaching methods, excellent flexibility, generous display area and visual teaching tools, excellent transparency and connection with other studios and shared learning spaces									
N/A	Does not apply									
8.14	Are Special Education support spaces, such as storage, space for washer/dryer, appropriately configured per the ed spec?				4			Comments	1.00	<b>4.00</b>
1	Very unsatisfactory - None provided	Storage missing within Special Education Room A130 on first floor.								
2	Unsatisfactory - Too small, disconnected, poor condition									
3	Neutral - Adequate size, average condition, needs updates or renovations to function well									
4	Satisfactory - Good size, connected, good condition									
5	Very Satisfactory - Generous size, connected, excellent condition									
N/A	Does not apply									
8.15	Are Accessible restrooms and changing rooms readily available to the Special Education spaces?				5			Comments	1.00	<b>5.00</b>
1	No									
5	Yes									

9 - Visual and Performing Arts		1	2	3	4	5	N/A	15.00	100%
9.1	Are music spaces and the cafeteria stage appropriately configured per the ed spec?					5		Comments	1.00 5.00
	1 Very unsatisfactory - Too small, missing program spaces 2 Unsatisfactory - Too small, poor condition 3 Neutral - Adequate size, adequate condition, needs updates or renovations to function well. 4 Satisfactory - Good size, good condition 5 Very Satisfactory - Generous size, excellent condition N/A Does not apply	Cafeteria stage is adequately sized - accommodates choir risers. Excellent A/V equipment. Just outside of cafeteria is an exterior theater area that provides a presentation space outside.							
9.2	Are music and performance storage spaces appropriately configured per the ed spec?					5		Comments	1.00 5.00
	1 Very unsatisfactory - None provided 2 Unsatisfactory - Too small, disconnected, poor condition 3 Neutral - Adequate size, average condition, needs updates or renovations to function well 4 Satisfactory - Good size, connected, good condition 5 Very Satisfactory - Generous size, connected, excellent condition N/A Does not apply								
9.3	Are Visual Arts spaces and storage appropriately configured per the ed spec?					5		Comments	1.00 5.00
	1 Very unsatisfactory - Too small, missing program spaces 2 Unsatisfactory - Too small, poor condition 3 Average - Adequate size, adequate condition, needs some renovations or updates to function well 4 Satisfactory - Good size, good condition 5 Very Satisfactory - Generous size, excellent condition N/A Does not apply								



10 - PE and Wellness		1	2	3	4	5	N/A	10.00	90%	
10.1	Does the campus meet the ed spec standard for physical education program spaces?					5		Comments	1.00 5.00	
	1 Very unsatisfactory - Too small, missing program spaces							Light-filled space. Square footage is right at 3,000SF and meets Ed Spec.		
	2 Unsatisfactory - Too small, poor condition									
	3 Average - Adequate size, adequate condition, needs some renovations or updates to function well									
	4 Satisfactory - Good size, good condition									
	5 Very Satisfactory - Generous size, excellent condition									
	N/A Does not apply									
10.2	Are the physical education storage spaces appropriately configured per the ed spec?				4			Comments	1.00 4.00	
	1 Very unsatisfactory - None provided							PE office doesn't have its own restroom/locker.		
	2 Unsatisfactory - Too small, disconnected, poor condition									
	3 Neutral - Adequate size, average condition, needs updates or renovations to function well									
	4 Satisfactory - Good size, connected, good condition									
	5 Very Satisfactory - Generous size, connected, excellent condition									
	N/A Does not apply									
11 - Food Services		1	2	3	4	5	N/A	10.00	90%	
11.1	Is the Dining Commons appropriately configured per the ed spec?					5		Comments	1.00 5.00	
	1 Very unsatisfactory - Too small, missing program spaces							Adequately sized and has two types of seating. Has access to outdoor picnic tables.		
	2 Unsatisfactory - Too small, poor condition, only one option for eatina space provided. inadequate circulation									
	3 Average - Adequate size and condition, needs updates or renovations to function well									
	4 Satisfactory - Good size and condition, good circulation, multiple options for eating space (ex: connection to outdoor eating space)									
	5 Very Satisfactory - Generous size, excellent condition and circulation, multiple options for eating space (ex: connection to outdoor eating space)									
	N/A Does not apply									
11.2	Are the Food Services support spaces appropriately configured per the ed spec?				4			Comments	1.00 4.00	
	1 Very unsatisfactory - None provided							Chair storage but no stage storage.		
	2 Unsatisfactory - Too small, disconnected, poor condition									
	3 Neutral - Adequate size, average condition, needs updates or renovations to function well									
	4 Satisfactory - Good size, connected, good condition									
	5 Very Satisfactory - Generous size, connected, excellent condition									
	N/A Does not apply									

12 - Media Resources		1	2	3	4	5	N/A	30.00	87%
12.1	Is the Library/Media Center easily accessible for the occupants and visitors to the school?				4			Comments	1.00 <b>4.00</b>
	1 Very unsatisfactory - Not accessible 2 Unsatisfactory - Limited access, difficult to find, no transparency 3 Average - Adequate accessibility, needs updates or renovations to function well 4 Satisfactory - Accessible, easy to find, good transparency, good condition 5 Very Satisfactory - Accessible, easy to find, excellent transparency, excellent condition N/A Does not apply							Visitors can access directly from outside, but not easily found since it is obscured from the parking lot. Centralized location within school.	
12.2	How well does the Library/Media Center support quiet study?				4			Comments	1.00 <b>4.00</b>
	1 Very unsatisfactory - No quiet study spaces 2 Unsatisfactory - One area in poor condition, poor acoustic privacy 3 Average - One or more areas provided, needing updates or renovations to function well 4 Satisfactory - Clusters or small rooms adjacent to media center, good condition, good acoustic privacy 5 Very Satisfactory - Multiple clusters or small rooms adjacent to media center, excellent condition, excellent acoustic privacy N/A Does not apply							One small meeting room adjacent to library share with Maker Space. Small nooks provided but not acoustically separate.	
12.3	How well does the Library/Media Center support social interaction?					5		Comments	1.00 <b>5.00</b>
	1 Very unsatisfactory - No space 2 Unsatisfactory - Too small, poor condition, layout and furnishings do not support informal interaction well 3 Average - Adequate size and condition, needs updates or renovations to function well. 4 Satisfactory - Good size, good condition, layout and furnishings support informal interactions 5 Very Satisfactory - Generous size, excellent condition, layout and furnishings support informal interactions N/A Does not apply							Learning stair in corridor seen as an extension of Media.	
12.4	How well does the Library/Media Center support collaborative work in small groups (4-8 students)?				4			Comments	1.00 <b>4.00</b>
	1 Very unsatisfactory - No breakout rooms, no flexible furniture, no support 2 Unsatisfactory - Too small, one area, poor condition 3 Average - Adequate size, multiple areas provided, needing updates or renovations to function well 4 Satisfactory - Clusters or small rooms adjacent to media center, flexible furniture, good condition 5 Very Satisfactory - Multiple clusters or small rooms adjacent to media center, flexible furniture, excellent condition N/A Does not apply							Areas that appear to support small groups, but no small rooms. Small conference room next to maker space to allow for small groups to meet.	

12 - Media Resources - Continued		1	2	3	4	5	N/A		
12.5	How well does the Library/Media Center support collaborative work in larger groups (10-25)?					5		Comments	1.00 <b>5.00</b>
	1 Very unsatisfactory - No gathering areas							Learning stair adjacent to Media and flexible seating in library to allow for larger groups to meet.	
	2 Unsatisfactory - Too small, one common space, limited seating, poor condition								
	3 Average - Adequate size, one common space, needs updates or renovations to function well								
	4 Satisfactory - Good size, multiple common spaces with seating, good condition								
	5 Very Satisfactory - Generous size, multiple commons spaces with seating, excellent condition								
	N/A Does not apply								
12.6	How well does the Library/Media Center support technology?				4			Comments	1.00 <b>4.00</b>
	1 Very unsatisfactory - No vis comm tools							Appears to have one area with multiple computer stations and one location with marker board. Digital display on wheels present.	
	2 Unsatisfactory - Outdated, poorly functioning, or insufficient								
	3 Good - Mix of old and new whiteboards/projectors/etc.								
	4 Satisfactory - Projectors, marker boards, smart boards in most spaces - good condition								
	5 Very Satisfactory - Projectors, marker boards, smart boards in most spaces - new condition								
	N/A Does not apply								
13 - Technology		1	2	3	4	5	N/A	20.00 <b>100%</b>	
13.1	How well equipped are the facilities with instructional technology?					5		Comments	1.00 <b>5.00</b>
	1 Very unsatisfactory - Limited to no technology present in instructional spaces								
	2 Unsatisfactory - One type of technology present								
	3 Average - Multiple types of technology, smart boards, poor condition, limited to only certain areas of school								
	4 Satisfactory - Multiple types of technology, smart boards, good condition.								
	5 Very Satisfactory - Multiple types of technology, smart boards, excellent condition								
	N/A Does not apply								
13.2	Is there an adequate number of power and data outlets in learning spaces?					5		Comments	1.00 <b>5.00</b>
	1 Very unsatisfactory - Outlet configuration does not support digital devices throughout school (1 per wall)							Each studio shows adequate power and data outlets, and wireless access point.	
	2 Unsatisfactory - Outlet configuration support digital devices only in certain areas of school (2 per wall)								
	3 Average - Outlet configuration support digital devices but not enough capacity throughout school (3 per wall)								
	4 Satisfactory - Outlet configuration support digital devices with adequate coverage and capacity throughout school (>3 per wall)								
	5 Very Satisfactory - Excellent outlet configuration to support digital devices throughout school (>3 per wall)								
	N/A Does not apply								

13 - Technology (cont.)		1	2	3	4	5	N/A			
13.3	Are there adequate charging locations for devices?					5		Comments	1.00 <b>5.00</b>	
1	Very unsatisfactory - No centralized charging location							Appear to have multiple outlets per wall. Charging towers located in certain spaces - make space.		
2	Unsatisfactory - Centralized charging location, but inadequate in size for number of devices									
3	Average - Charging cart or tower but not adequately sized for number of devices									
4	Satisfactory - Charging cart or tower not centralized									
5	Very Satisfactory - Charging cart or tower located centralized location. Excellent condition									
N/A	Does not apply									
13.4	Is there adequate AV for presentations spaces – cafeteria and gym?					5		Comments	1.00 <b>5.00</b>	
1	Very unsatisfactory - AV not present in one or more space									
2	Unsatisfactory - AV undersized for room, poor condition									
3	Average - Adequately sized / poor condition OR AV undersized / adequate condition									
4	Satisfactory - Good size, good condition									
5	Very Satisfactory - Generous sized, excellent condition									
N/A	Does not apply									
13.5	Is there digital media signage at the reception area?					5		Comments	0.00 <b>0.00</b>	
1	Very unsatisfactory - No digital media present in reception area							Yes. Large display.		
2	Unsatisfactory - Undersized, poor condition									
3	Average - Adequately sized / poor condition OR undersized / adequate condition									
4	Satisfactory - Media signage present, good sized, good condition									
5	Very Satisfactory - Generously sized, excellent condition									
N/A	Does not apply									

14 - Administration Spaces		1	2	3	4	5	N/A	20.00	90%
14.1	Is there a reception area that functions as a security checkpoint for all visitors?							1.00	
	1 Very unsatisfactory - No security checkpoint								
	2 Unsatisfactory - Checkpoint is too small, poor condition								
	3 Average - Needs updates or renovations to function well								
	4 Satisfactory - Good size, good condition								
	5 Very Satisfactory - Generous size, excellent condition								
	N/A Does not apply								
14.2	Does the administration area feel welcoming?					5		1.00	5.00
	1 Very unsatisfactory - No welcome space								
	2 Unsatisfactory - Too small, poor lighting and transparency, limited informal seating, poor condition								
	3 Average - Adequate size and layout, needs updates or renovations to feel welcoming								
	4 Satisfactory - Good size and layout, good lighting and transparency, informal seating provided								
	5 Very Satisfactory - Generous size and layout, plenty of light and transparency, informal seating provided, excellent condition								
	N/A Does not apply								
14.3	For those spaces that require it, does the administration area have adequate acoustic privacy?			3				1.00	3.00
	1 Very unsatisfactory - No acoustic separations								
	2 Unsatisfactory - Acoustic separations do not perform								
	3 Average - Some acoustic separations function okay, but portions need updates or renovations								
	4 Satisfactory - Good acoustic separations								
	5 Very Satisfactory - Excellent acoustic separations								
	N/A Does not apply								
14.4	Are conference rooms easily accessed for public / parent use?					5		1.00	5.00
	1 Very unsatisfactory - Not accessible for public/parent								
	2 Unsatisfactory - Limited access, no transparency, poor condition, difficult to find								
	3 Average - Adequate accessibility, needs updates or renovations to function well								
	4 Satisfactory - Good accessibility, good transparency, good size and condition								
	5 Very Satisfactory - Excellent accessibility, excellent transparency, generous size, excellent condition								
	N/A Does not apply								

Per construction document review, most partitions between rooms appear to deck with insulation. Speech office has good sound isolation. Offices and office doors do not. Talking voice could be heard through door. Principal confirmed that private discussions are challenging because they can be heard in the hallway.

Community B108 is directly accessed within the entry vestibule and there are two conference rooms within Admin. Location is easy to use.